

AENC-TQST-LAN-DWG-0002

Norwich to Tilbury

Volume 2: Plans, Drawings and Sections

Document: 2.2 Land Plans - Section F

Final Issue D

June 2026

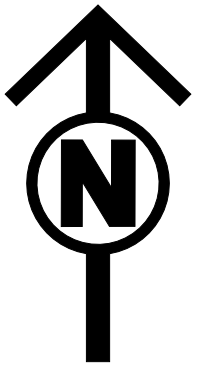
Planning Inspectorate Reference: EN020027

Infrastructure Planning (Applications: Prescribed Forms and Procedure)
Regulations 2009 Regulation 5(2)(i)(i)-(iii)

nationalgrid

LAND PLANS KEY PLAN
REGULATION 5(2)(i)-(iii)
SECTION F (SHEET 1 OF 1,

BRAINTREE DISTRICT COUNCIL, CHELMSFORD CITY COUNCIL AND BRENTWOOD BOROUGH COUNCIL)



SITE MAP

Legend

- - - Local authority boundary
- - - Section boundary & local authority boundary
- Section boundary
- Sheet Index
- Order Limits

Notes

1. For additional detail on the plan suites, please refer to the Guide to Plans (document reference 2.0), located in the Volume 2 of the DCO application.
2. This drawing is scaled at paper size A0, therefore any prints taken at smaller sizes will affect accuracy of the measurement units and should not be scaled against.

Coordinate System: British National Grid
Sheet X Centroid Coordinate : 569889 Sheet Y Centroid Coordinate : 208832



BACKGROUND MAPPING INFORMATION HAS BEEN REPRODUCED FROM THE ORDINANCE SURVEY BY PERMISSION OF ORDINANCE SURVEY OF THE CONTROLLER OF HIS MAJESTY'S STATIONERY OFFICE. © CROWN COPYRIGHT AND DATABASE RIGHTS(2025) LICENCE OS100024241 AND ACD000807946.

Issue	Date	Remarks	Drawn	Checked	Approved
D	JUN-2026	For deadline five	CLJ	RCA	KPA
C	MAY-2026	For deadline four	CLJ	KPA	TPR
B	OCT-2025	October 2025 Update	CLJ	KPA	TPR
A	AUG-2025	For DCO Submission	CLJ	KPA	TPR

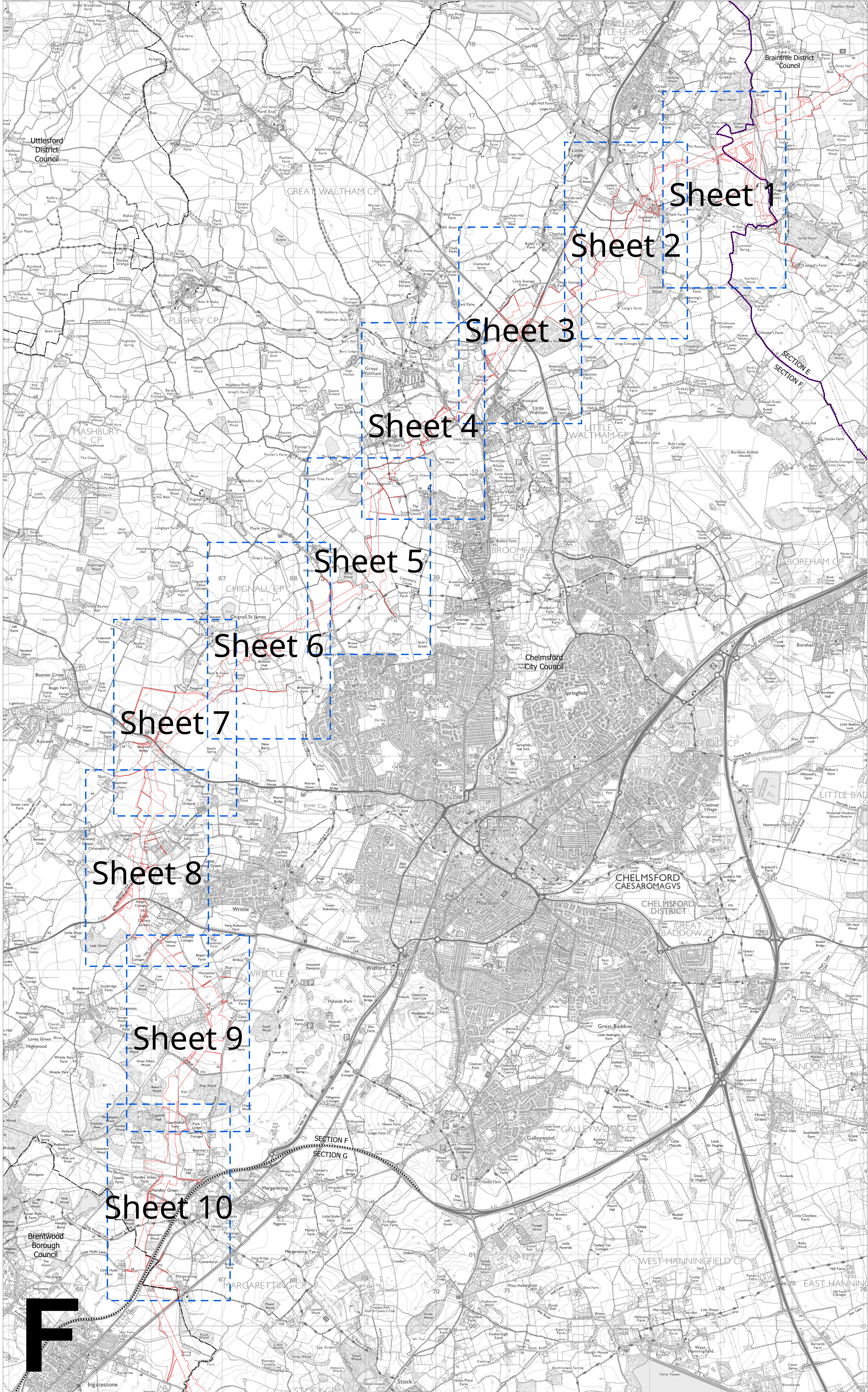
Title:
THE NATIONAL GRID (NORWICH TO TILBURY) ORDER
LAND PLANS KEY PLAN
REGULATION 5(2)(i)-(iii)
SECTION F (SHEET 1 OF 1,
BRAINTREE DISTRICT COUNCIL,
CHELMSFORD CITY COUNCIL
AND BRENTWOOD BOROUGH COUNCIL)

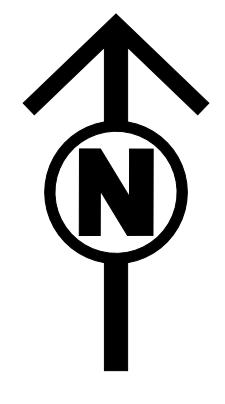
nationalgrid

PINS Application Number
EN020027

National Grid Drawing Reference
AENC-TQST-LAN-DWG-0002

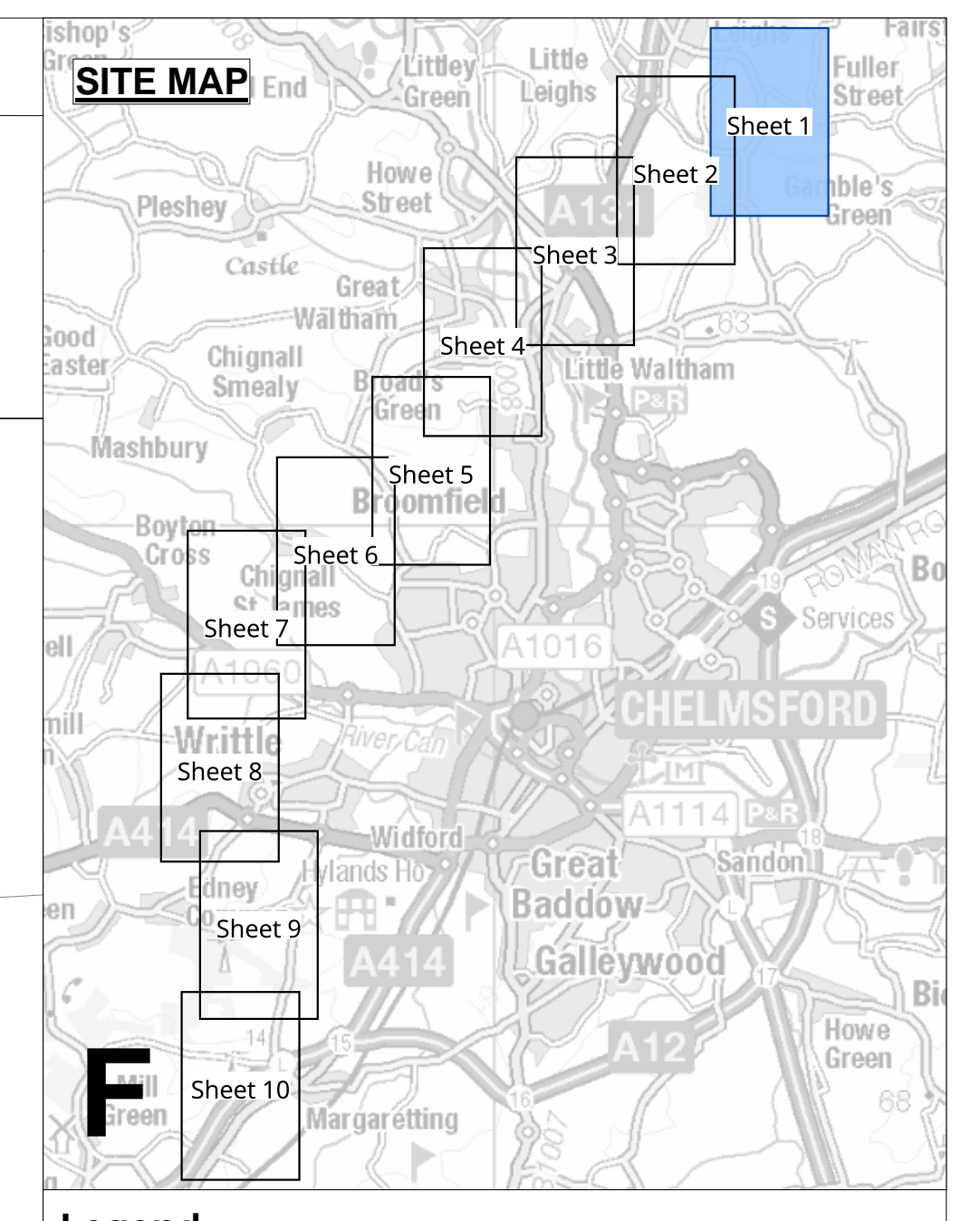
Scale	Sheet Size	Sheet	Issue
1:18,000	A0	SHEET 1 of 1	D



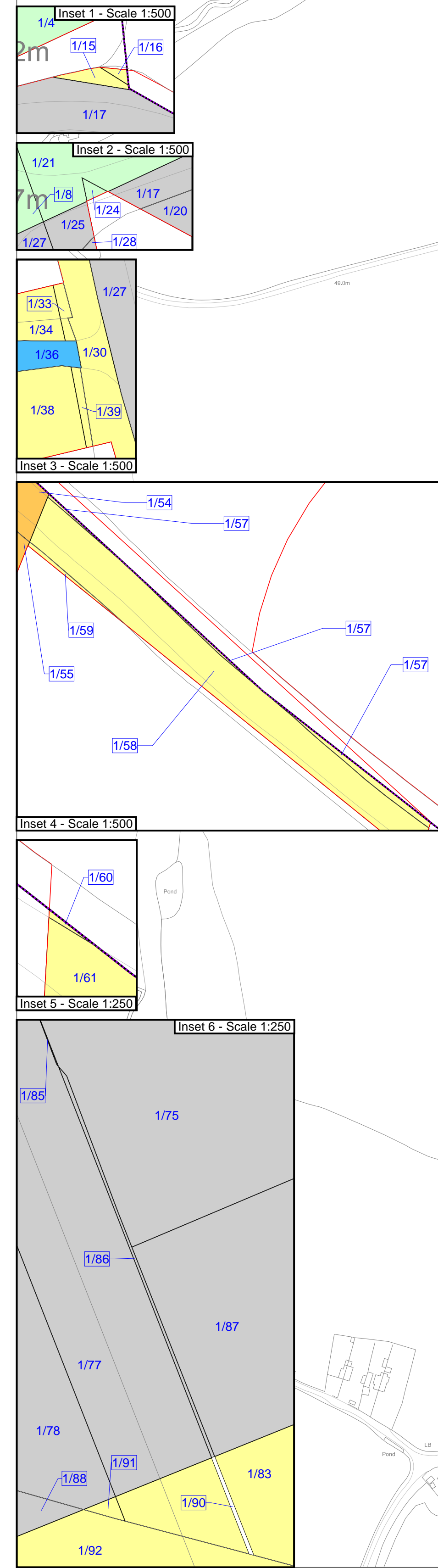
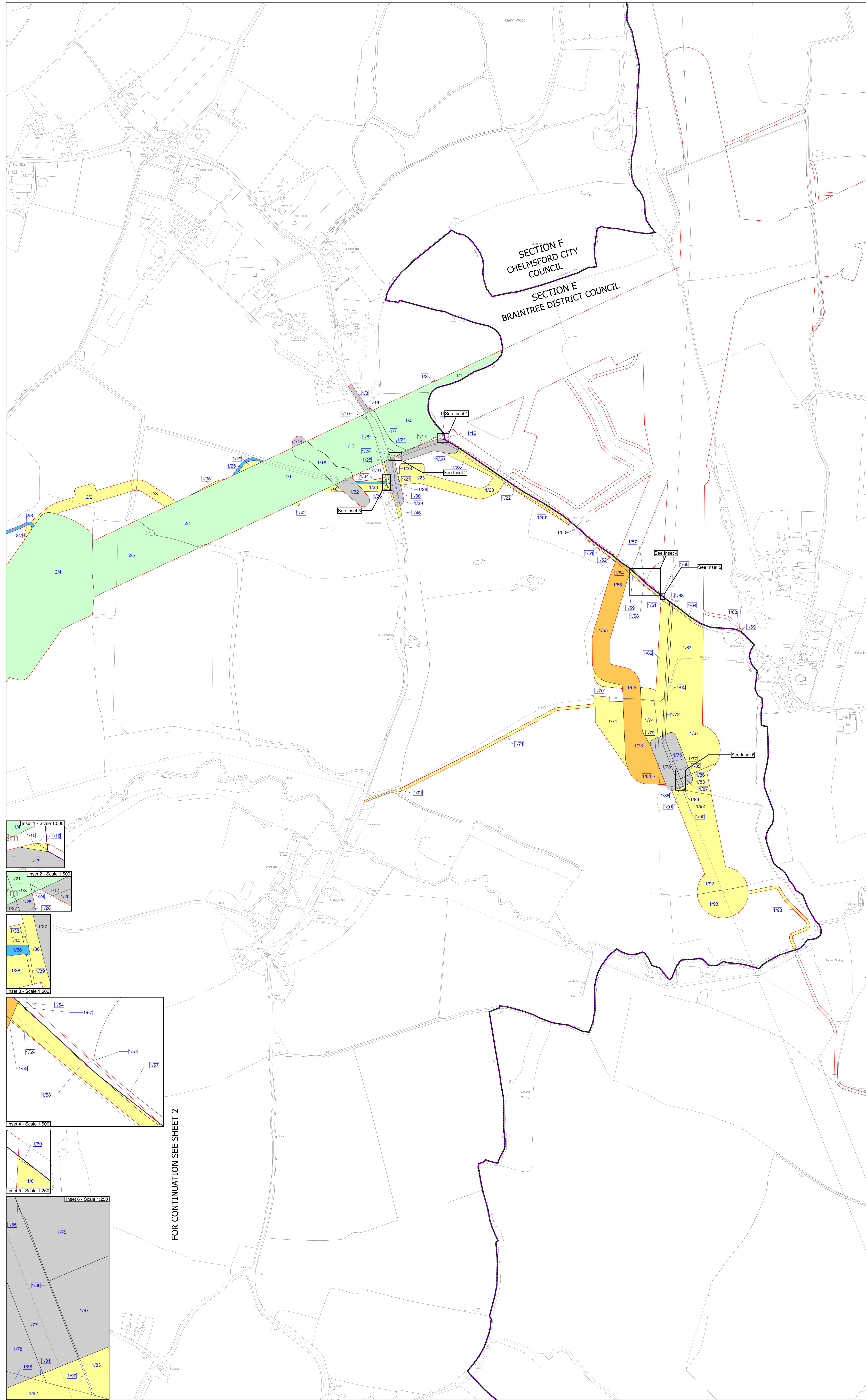


THE NATIONAL GRID (NORWICH TO TILBURY) ORDER
 LAND PLANS
 REGULATION 5(2)(i)-(iii)
 SECTION F (SHEET 1 OF 10,
 CHELMSFORD CITY COUNCIL AND BRAINTREE DISTRICT COUNCIL)

Application Document 2.2

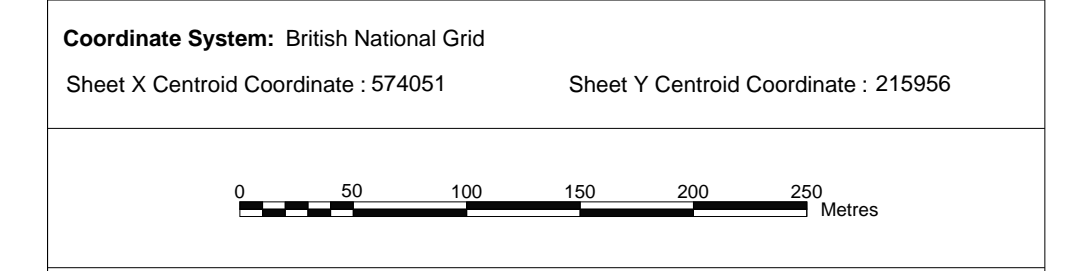


- Legend**
- Local authority boundary
 - Section boundary and local authority boundary
 - Section boundary
 - Sheet index cutlines
 - Order Limits
 - Class 1 - Compulsory acquisition of land
 - Class 2 - Compulsory acquisition of rights - Overhead line
 - Class 3 - Compulsory acquisition of rights - Underground cable system
 - Class 4 - Compulsory acquisition of rights - Overhead line and underground cable system
 - Class 4A - Compulsory Acquisition of Rights - Works for the protection of existing UKOP apparatus affected by the authorised development
 - Class 5 - Compulsory acquisition of rights - Access
 - Class 6 - Compulsory acquisition of rights - Drainage
 - Class 7 - Temporary use
 - Class 8 - Land not subject to powers of acquisition nor temporary use



FOR CONTINUATION SEE SHEET 2

Notes
 1. For additional detail on the plan suites, please refer to the Guide to Plans (document reference 2.0), located in the Volume 2 of the DCO application.
 2. This drawing is scaled at paper size A0, therefore any prints taken at smaller sizes will affect accuracy of the measurement units and should not be scaled against.



BACKGROUND MAPPING INFORMATION HAS BEEN REPRODUCED FROM THE ORDINANCE SURVEY BY PERMISSION OF ORDINANCE SURVEY OF THE CONTROLLER OF HIS MAJESTY'S STATIONERY OFFICE. © CROWN COPYRIGHT AND DATABASE RIGHTS (2025) LICENCE OS100024241 AND AG0000807946.

D	JUN-2026	For deadline five	CLJ	RCA	KPA
C	MAY-2026	For deadline four	CLJ	RCA	KPA
B	OCT-2025	October 2025 Update	BBU	AMI	CLJ
A	AUG-2025	For DCO Submission	BBU	CBE	CLJ

Issue **Date** **Remarks** **Drawn** **Checked** **Approved**

Title: THE NATIONAL GRID (NORWICH TO TILBURY) ORDER LAND PLANS REGULATION 5(2)(i)-(iii) SECTION F (SHEET 1 OF 10 CHELMSFORD CITY COUNCIL AND BRAINTREE DISTRICT COUNCIL)

nationalgrid

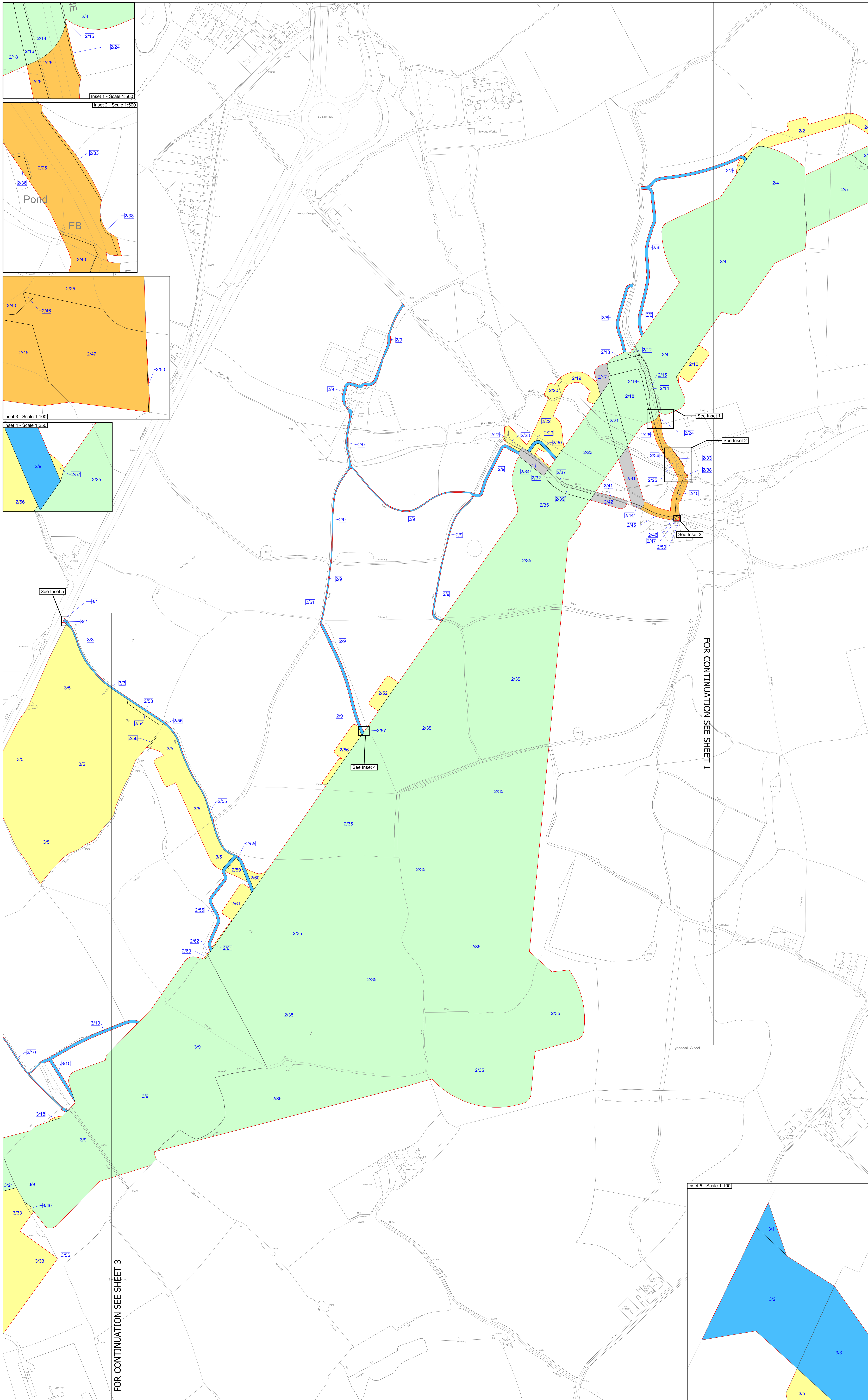
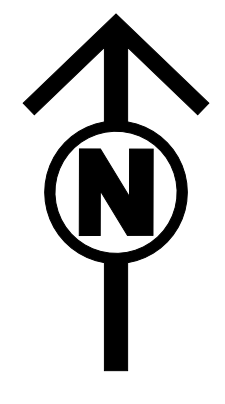
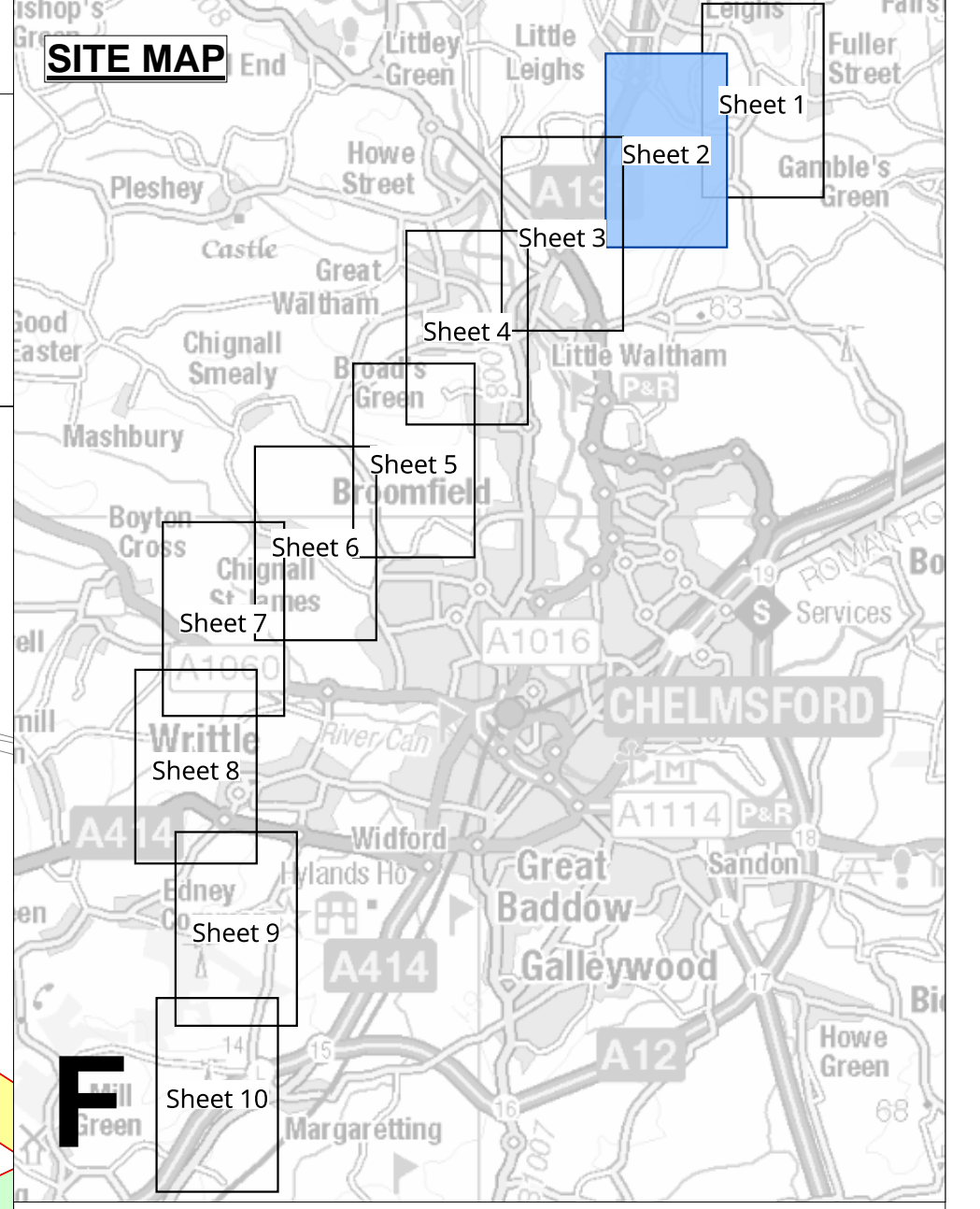
PINS Application Number: EN020027

National Grid Drawing Reference: AENC-TQST-LAN-DWG-0002

Scale	Sheet Size	Sheet	Issue
1:2,500	A0	SHEET 1 of 10	D

THE NATIONAL GRID (NORWICH TO TILBURY) ORDER
 LAND PLANS
 REGULATION 5(2)(i)-(iii)
 SECTION F (SHEET 2 OF 10,
 CHELMSFORD CITY COUNCIL)

Application Document 2.2



- Legend**
- Local authority boundary
 - Section boundary & local authority boundary
 - Section boundary
 - Sheet index outlines
 - Order Limits
 - Class 1 - Compulsory acquisition of land
 - Class 2 - Compulsory acquisition of rights - Overhead line
 - Class 3 - Compulsory acquisition of rights - Underground cable system
 - Class 4 - Compulsory acquisition of rights - Overhead line and underground cable system
 - Class 4A - Compulsory Acquisition of Rights - Works for the protection of existing UKOP apparatus affected by the authorised development
 - Class 5 - Compulsory acquisition of rights - Access
 - Class 6 - Compulsory acquisition of rights - Drainage
 - Class 7 - Temporary use
 - Class 8 - Land not subject to powers of acquisition nor temporary use

Notes

- For additional detail on the plan suites, please refer to the Guide to Plans (document reference 2.0), located in the Volume 2 of the DCO application.
- This drawing is scaled at paper size A0, therefore any prints taken at smaller sizes will affect accuracy of the measurement units and should not be scaled against.

Coordinate System: British National Grid
 Sheet X Centroid Coordinate : 572670 Sheet Y Centroid Coordinate : 215243

BACKGROUND MAPPING INFORMATION HAS BEEN REPRODUCED FROM THE ORDINANCE SURVEY BY PERMISSION OF ORDINANCE SURVEY OF THE CONTROLLER OF HIS MAJESTY'S STATIONERY OFFICE. © CROWN COPYRIGHT AND DATABASE RIGHTS(2025) LICENCE OS100024241 AND AG000807946.

Issue	Date	Remarks	Drawn	Checked	Approved
D	JUN-2026	For deadline five	CLJ	RCA	KPA
C	MAY-2026	For deadline four	CLJ	RCA	KPA
B	OCT-2025	October 2025 Update	BBU	AMI	CLJ
A	AUG-2025	For DCO Submission	BBU	AMI	CLJ

Title:
 THE NATIONAL GRID (NORWICH TO TILBURY) ORDER
 LAND PLANS
 REGULATION 5(2)(i)-(iii)
 SECTION F (SHEET 2 OF 10
 CHELMSFORD CITY COUNCIL)

nationalgrid

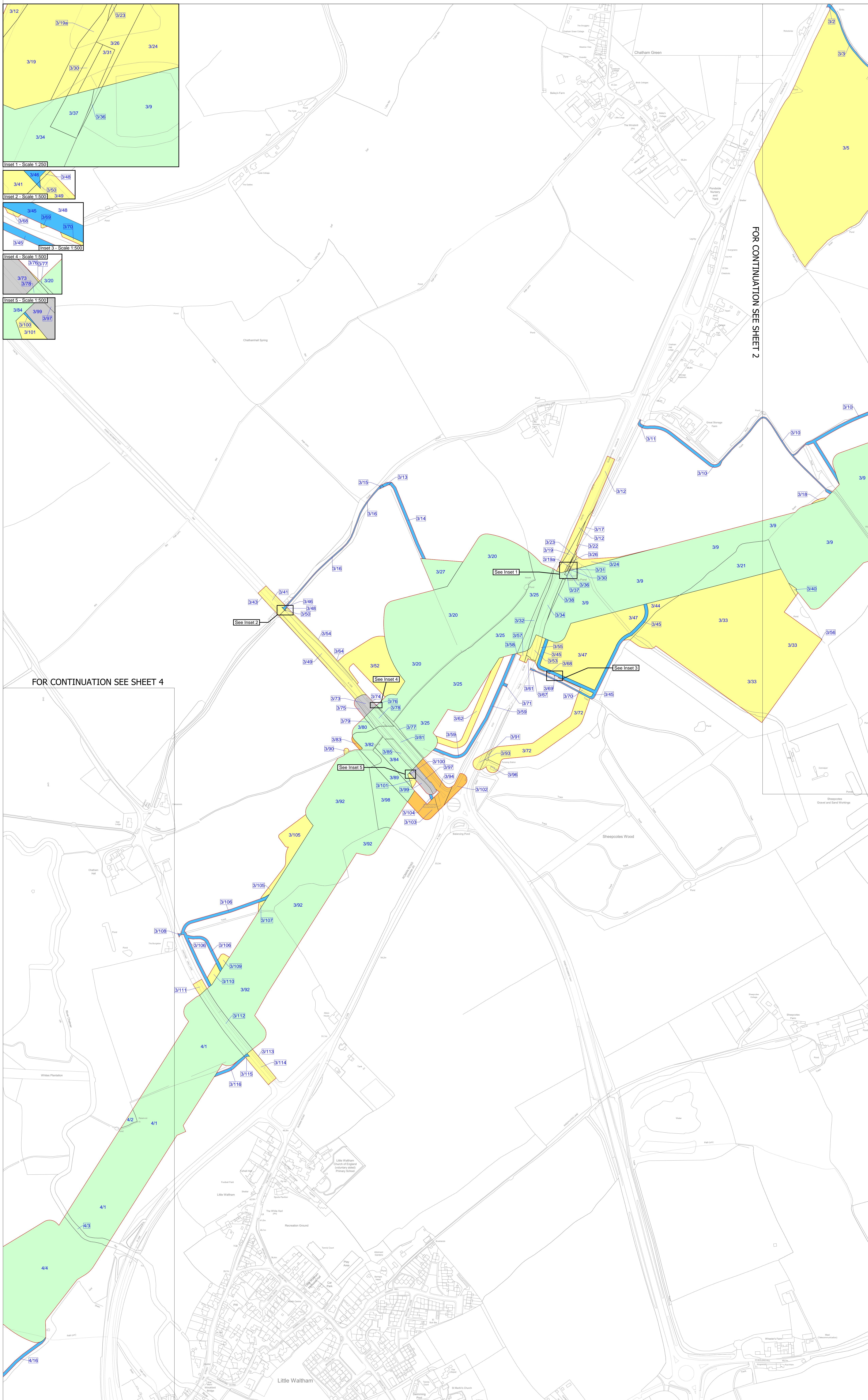
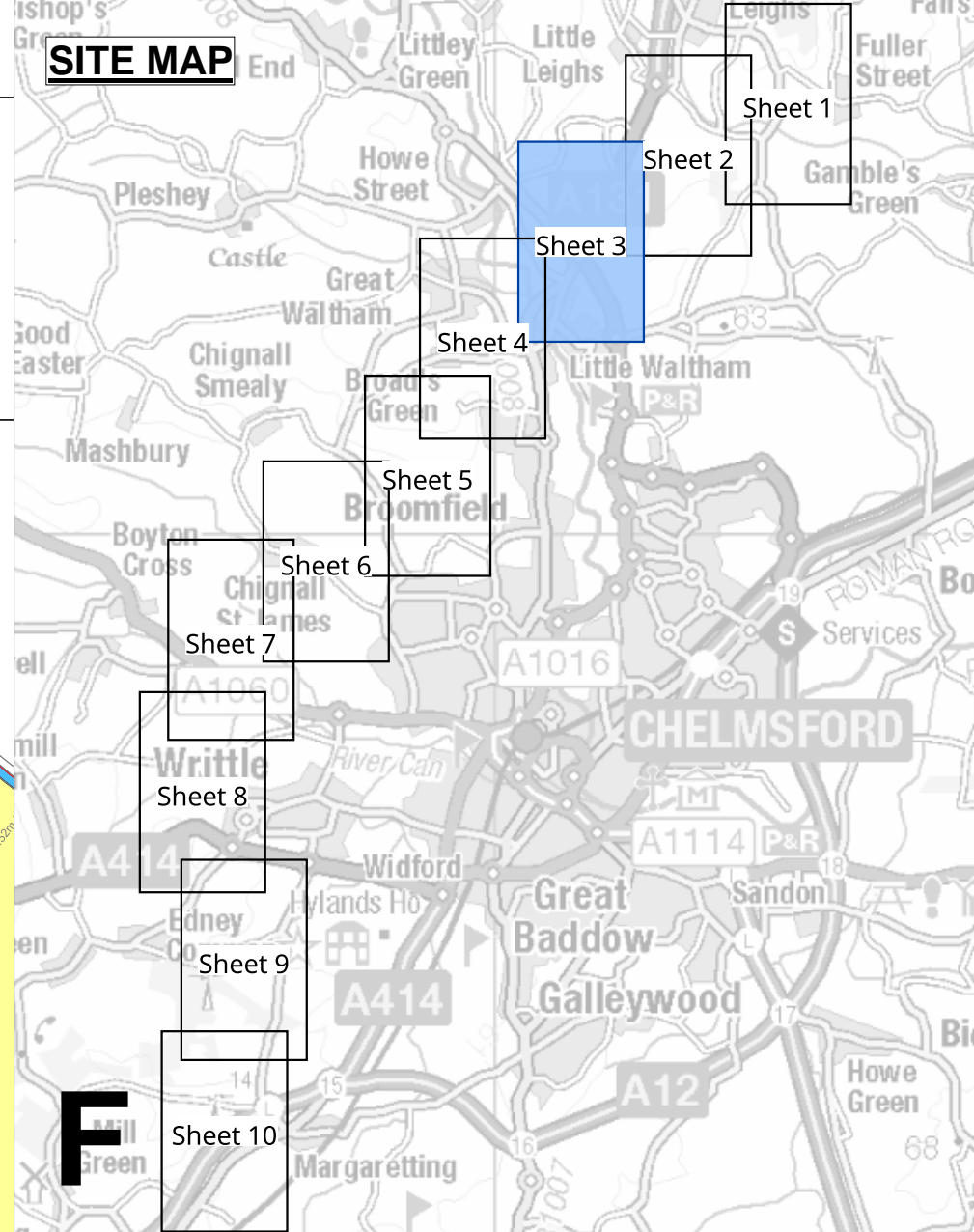
PINS Application Number
 EN020027

National Grid Drawing Reference
 AENC-TQST-LAN-DWG-0002

Scale	Sheet Size	Sheet	Issue
1:2,500	A0	SHEET 2 of 10	D

THE NATIONAL GRID (NORWICH TO TILBURY) ORDER
 LAND PLANS
 REGULATION 5(2)(i)-(iii)
 SECTION F (SHEET 3 OF 10,
 CHELMSFORD CITY COUNCIL)

Application Document 2.2



- Legend**
- Local authority boundary
 - Section boundary and local authority boundary
 - Section boundary
 - Sheet index cutlines
 - Order Limits
 - Class 1 - Compulsory acquisition of land
 - Class 2 - Compulsory acquisition of rights - Overhead line
 - Class 3 - Compulsory acquisition of rights - Underground cable system
 - Class 4 - Compulsory acquisition of rights - Overhead line and underground cable system
 - Class 4A - Compulsory Acquisition of Rights - Works for the protection of existing UKOP apparatus affected by the authorised development
 - Class 5 - Compulsory acquisition of rights - Access
 - Class 6 - Compulsory acquisition of rights - Drainage
 - Class 7 - Temporary use
 - Class 8 - Land not subject to powers of acquisition nor temporary use

FOR CONTINUATION SEE SHEET 2

FOR CONTINUATION SEE SHEET 4

- Notes**
1. For additional detail on the plan suites, please refer to the Guide to Plans (document reference 2.0), located in the Volume 2 of the DCO application.
 2. This drawing is scaled at paper size A0, therefore any prints taken at smaller sizes will affect accuracy of the measurement units and should not be scaled against.

Coordinate System: British National Grid
 Sheet X Centroid Coordinate : 571184 Sheet Y Centroid Coordinate : 214051

BACKGROUND MAPPING INFORMATION HAS BEEN REPRODUCED FROM THE ORDINANCE SURVEY BY PERMISSION OF ORDINANCE SURVEY OF THE CONTROLLER OF HIS MAJESTY'S STATIONERY OFFICE. © CROWN COPYRIGHT AND DATABASE RIGHTS(2025) LICENCE OS100024241 AND AG000807946.

D	JUN-2026	For deadline five	CLJ	RCA	KPA
C	MAY-2026	For deadline four	CLJ	RCA	KPA
B	OCT-2025	October 2025 Update	BBU	AMI	CLJ
A	AUG-2025	For DCO Submission	BBU	KGA	CLJ

Issue	Date	Remarks	Drawn	Checked	Approved
-------	------	---------	-------	---------	----------

Title:
 THE NATIONAL GRID (NORWICH TO TILBURY) ORDER
 LAND PLANS
 REGULATION 5(2)(i)-(iii)
 SECTION F (SHEET 3 OF 10
 CHELMSFORD CITY COUNCIL)



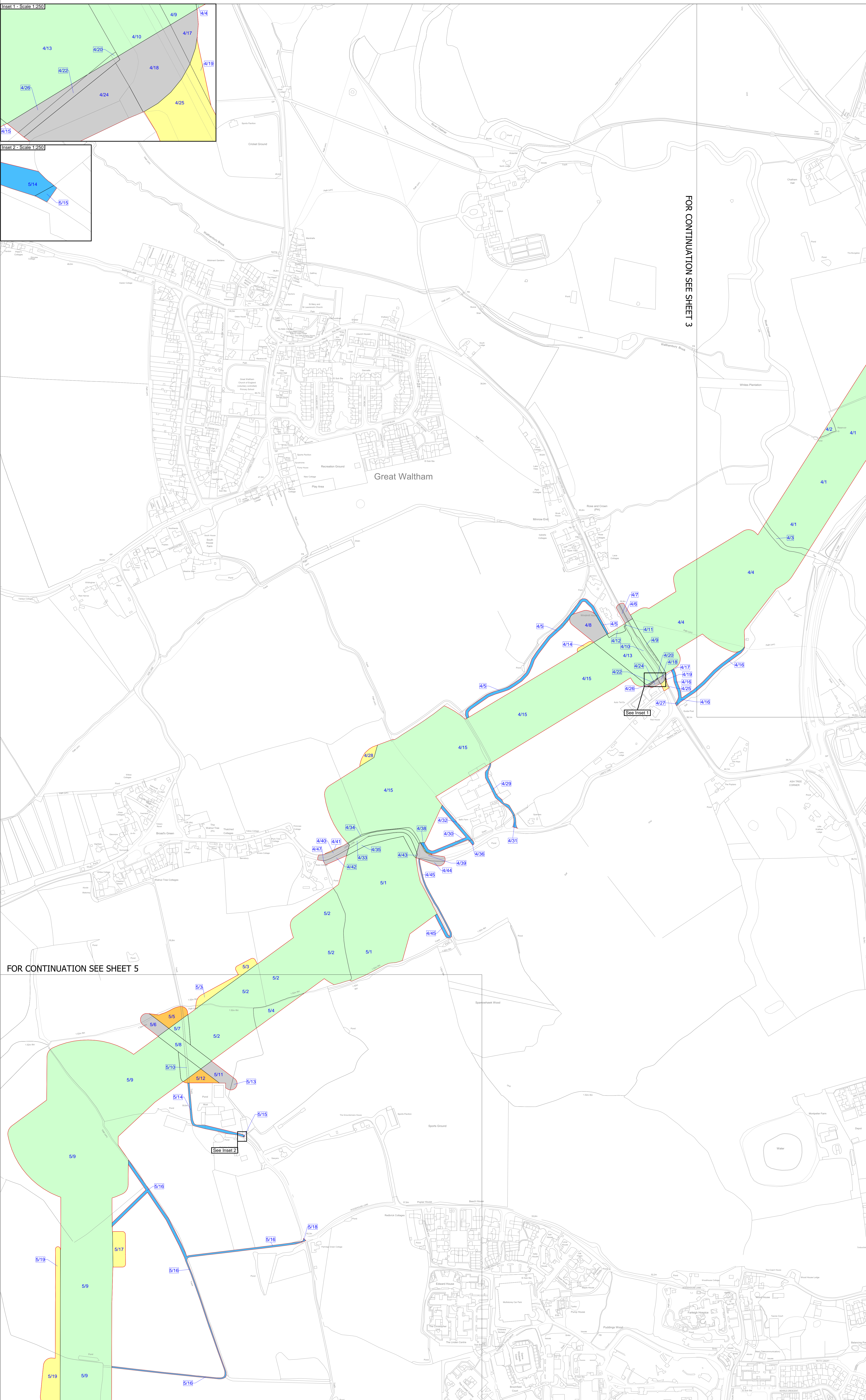
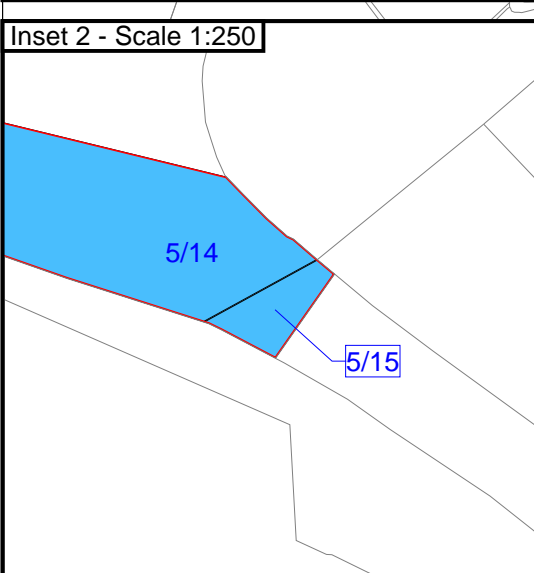
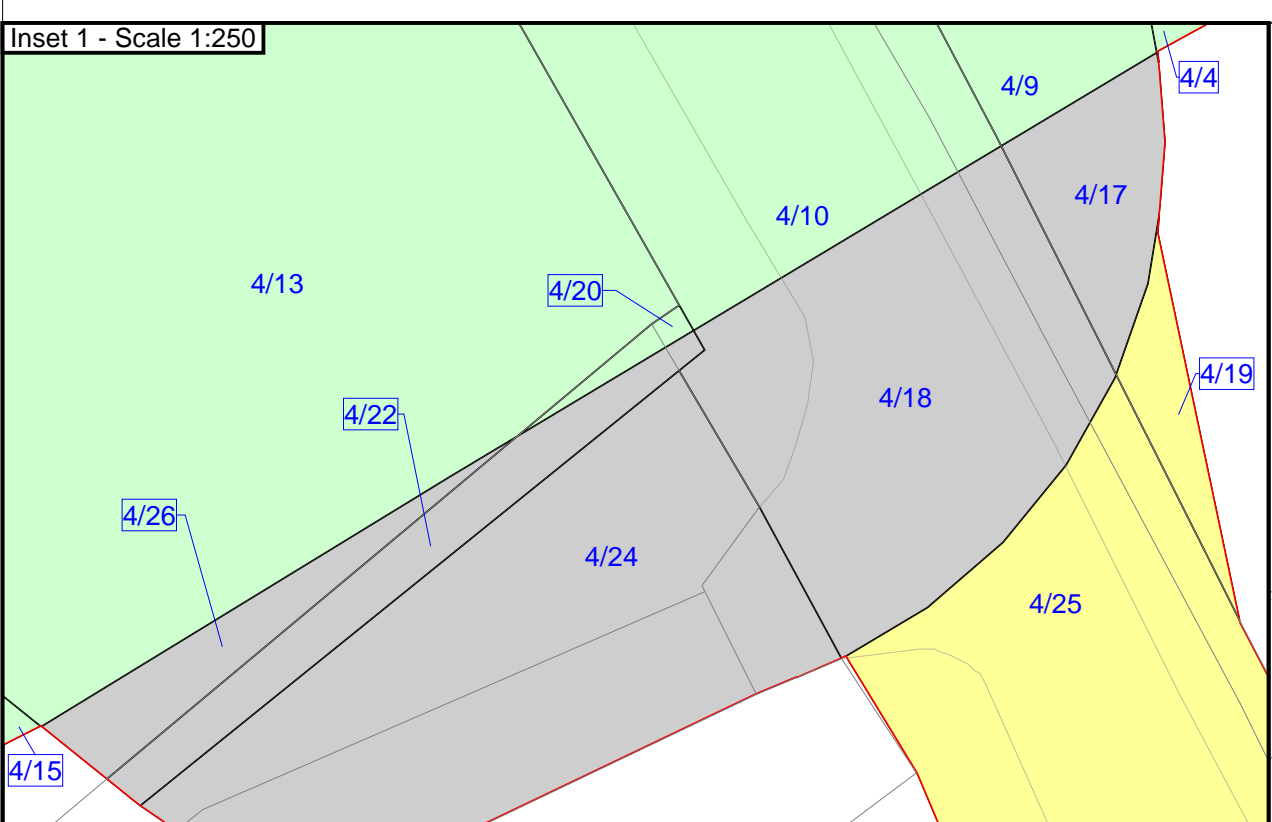
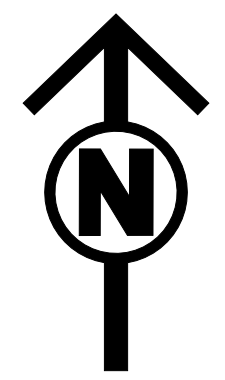
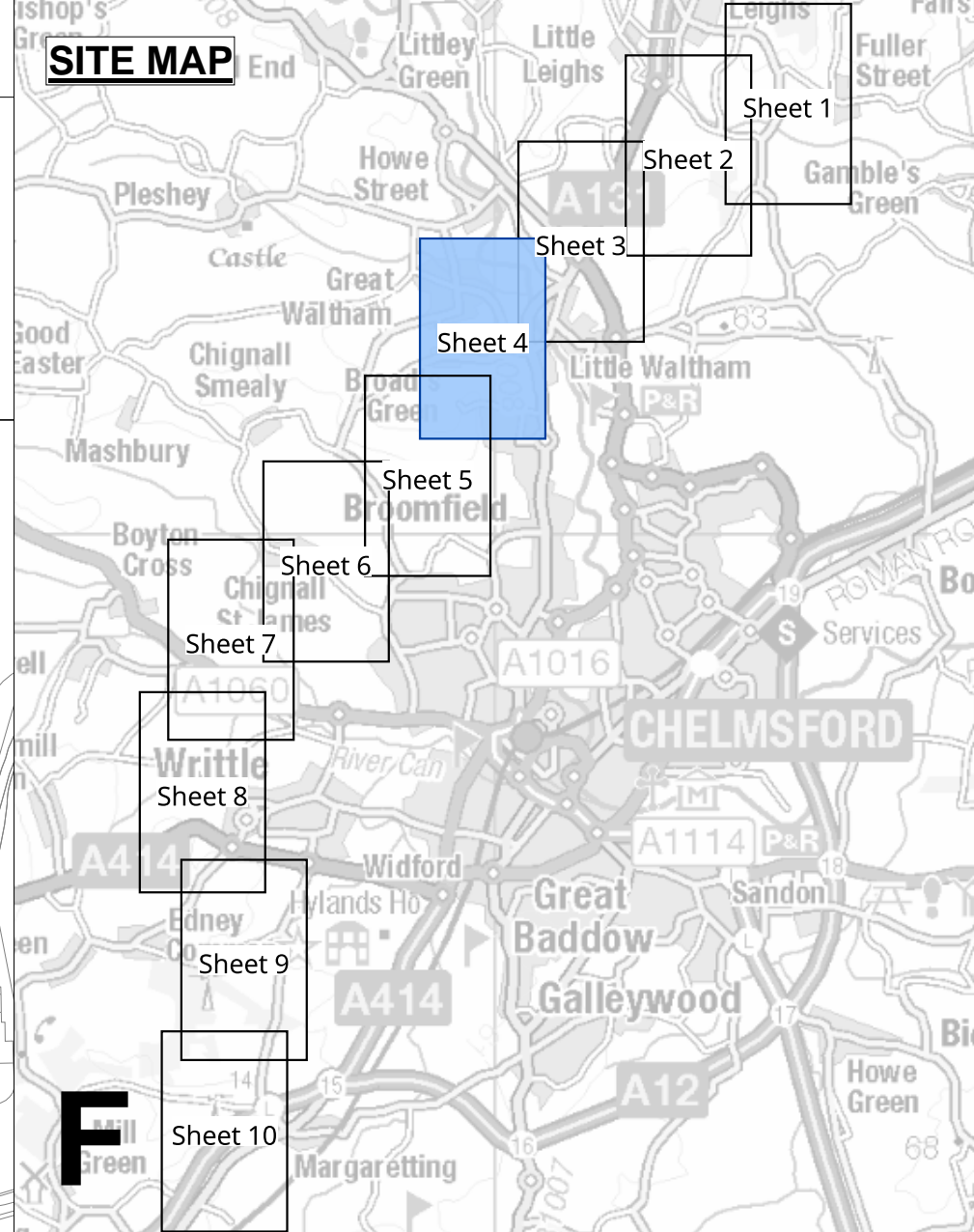
PINS Application Number: EN020027

National Grid Drawing Reference: AENC-TQST-LAN-DWG-0002

Scale	Sheet Size	Sheet	Issue
1:2,500	A0	SHEET 3 of 10	D

THE NATIONAL GRID (NORWICH TO TILBURY) ORDER
 LAND PLANS
 REGULATION 5(2)(i)-(iii)
 SECTION F (SHEET 4 OF 10,
 CHELMSFORD CITY COUNCIL)

Application Document 2.2



- Legend**
- Local authority boundary
 - Section boundary & local authority boundary
 - Section boundary
 - Sheet index cutlines
 - Order Limits
 - Class 1 - Compulsory acquisition of land
 - Class 2 - Compulsory acquisition of rights - Overhead line
 - Class 3 - Compulsory acquisition of rights - Underground cable system
 - Class 4 - Compulsory acquisition of rights - Overhead line and underground cable system
 - Class 4A - Compulsory Acquisition of Rights - Works for the protection of existing UKOP apparatus affected by the authorised development
 - Class 5 - Compulsory acquisition of rights - Access
 - Class 6 - Compulsory acquisition of rights - Drainage
 - Class 7 - Temporary use
 - Class 8 - Land not subject to powers of acquisition nor temporary use

- Notes**
1. For additional detail on the plan suites, please refer to the Guide to Plans (document reference 2.0), located in the Volume 2 of the DCO application.
 2. This drawing is scaled at paper size A0, therefore any prints taken at smaller sizes will affect accuracy of the measurement units and should not be scaled against.

Coordinate System: British National Grid
 Sheet X Centroid Coordinate: 569821 Sheet Y Centroid Coordinate: 212709

BACKGROUND MAPPING INFORMATION HAS BEEN REPRODUCED FROM THE ORDINANCE SURVEY BY PERMISSION OF ORDINANCE SURVEY OF THE CONTROLLER OF HIS MAJESTY'S STATIONERY OFFICE. © CROWN COPYRIGHT AND DATABASE RIGHTS (2025) LICENCE OS100024241 AND AG0000807946.

D	JUN-2026	For deadline five	CLJ	RCA	KPA
C	MAY-2026	For deadline four	CLJ	RCA	KPA
B	OCT-2025	October 2025 Update	SGR	AMI	CLJ
A	AUG-2025	For DCO Submission	SGR	KGA	CLJ

Issue **Date** **Remarks** **Drawn** **Checked** **Approved**

Title:
 THE NATIONAL GRID (NORWICH TO TILBURY) ORDER LAND PLANS REGULATION 5(2)(i)-(iii) SECTION F (SHEET 4 OF 10 CHELMSFORD CITY COUNCIL)

nationalgrid

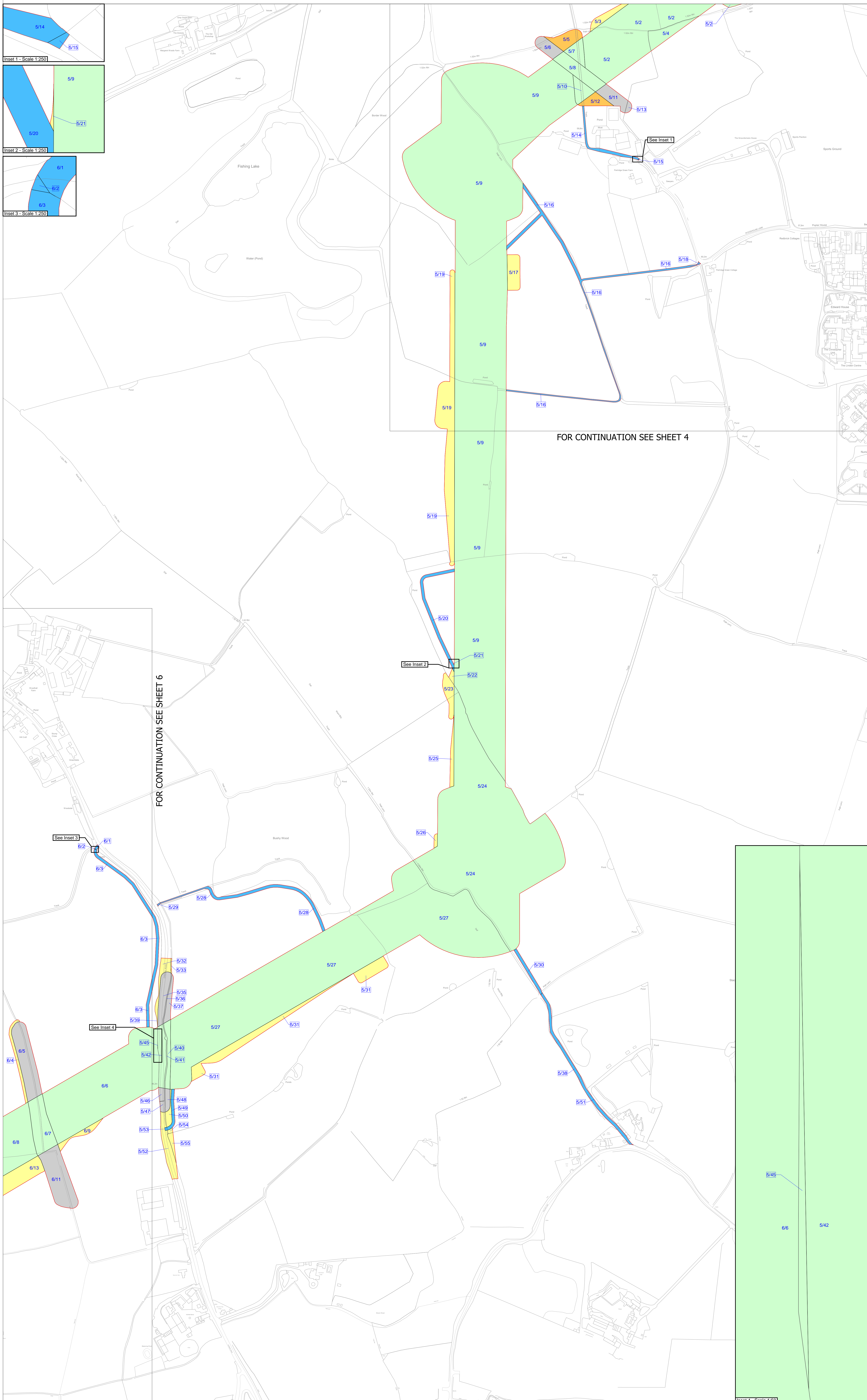
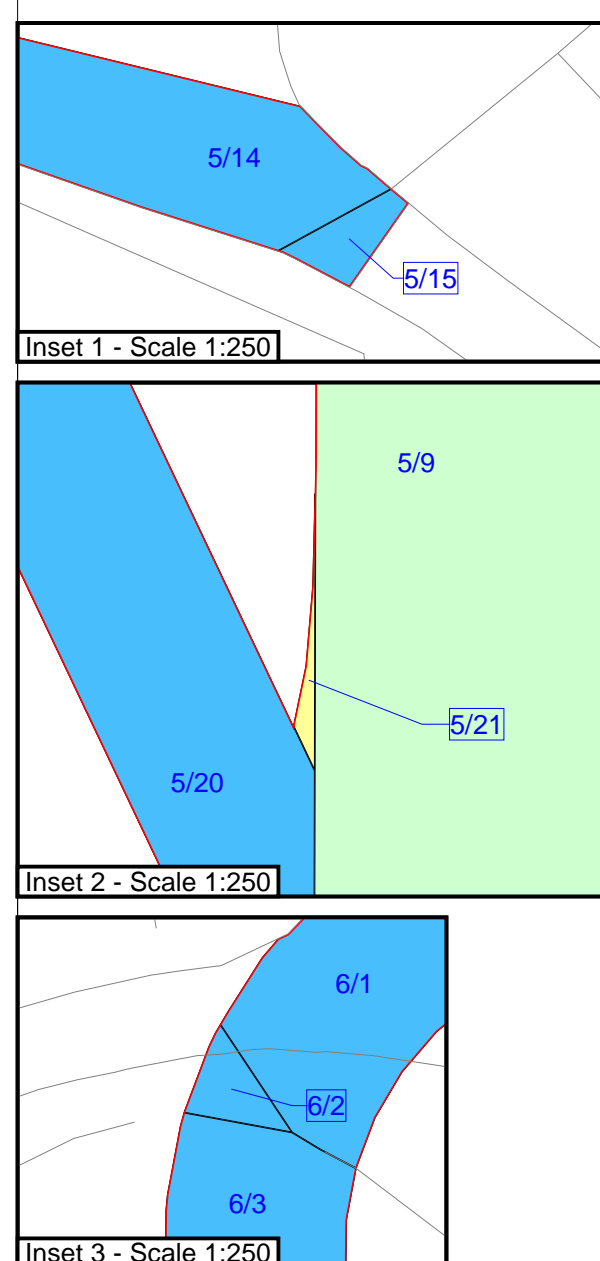
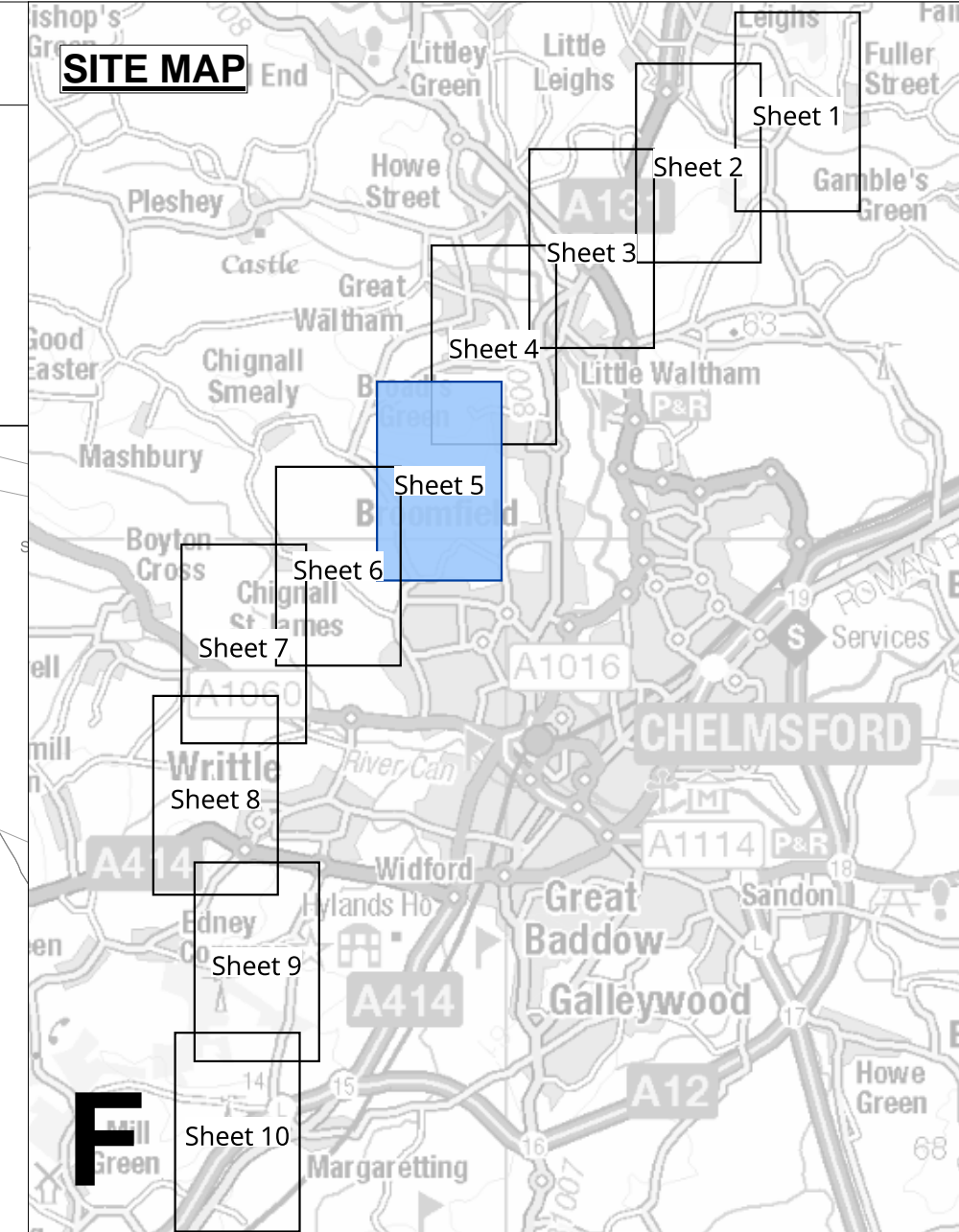
PINS Application Number: EN020027

National Grid Drawing Reference: AENC-TQST-LAN-DWG-0002

Scale	Sheet Size	Sheet	Issue
1:2,500	A0	SHEET 4 of 10	D

THE NATIONAL GRID (NORWICH TO TILBURY) ORDER
 LAND PLANS
 REGULATION 5(2)(i)-(iii)
 SECTION F (SHEET 5 OF 10,
 CHELMSFORD CITY COUNCIL)

Application Document 2.2



- Legend**
- Local authority boundary
 - Section boundary & local authority boundary
 - Section boundary
 - Sheet index cutlines
 - Order Limits
 - Class 1 - Compulsory acquisition of land
 - Class 2 - Compulsory acquisition of rights - Overhead line
 - Class 3 - Compulsory acquisition of rights - Underground cable system
 - Class 4 - Compulsory acquisition of rights - Overhead line and underground cable system
 - Class 4A - Compulsory Acquisition of Rights - Works for the protection of existing UKOP apparatus affected by the authorised development
 - Class 5 - Compulsory acquisition of rights - Access
 - Class 6 - Compulsory acquisition of rights - Drainage
 - Class 7 - Temporary use
 - Class 8 - Land not subject to powers of acquisition nor temporary use

FOR CONTINUATION SEE SHEET 4

FOR CONTINUATION SEE SHEET 6

Notes
 1. For additional detail on the plan suites, please refer to the Guide to Plans (document reference 2.0), located in the Volume 2 of the DCO application.
 2. This drawing is scaled at paper size A0, therefore any prints taken at smaller sizes will affect accuracy of the measurement units and should not be scaled against.

Coordinate System: British National Grid
 Sheet X Centroid Coordinate: 569061 Sheet Y Centroid Coordinate: 210810

BACKGROUND MAPPING INFORMATION HAS BEEN REPRODUCED FROM THE ORDNANCE SURVEY BY PERMISSION OF ORDNANCE SURVEY OF THE CONTROLLER OF HIS MAJESTY'S STATIONERY OFFICE. © CROWN COPYRIGHT AND DATABASE RIGHTS (2025) LICENCE OS100024241 AND AG000807946.

Issue	Date	Remarks	Drawn	Checked	Approved
D	JUN-2026	For deadline five	CLJ	RCA	KPA
C	MAY-2026	For deadline four	CLJ	RCA	KPA
B	OCT-2025	October 2025 Update	KGA	AMI	CLJ
A	AUG-2025	For DCO Submission	KGA	CBE	CLJ

Title:
 THE NATIONAL GRID (NORWICH TO TILBURY) ORDER LAND PLANS REGULATION 5(2)(i)-(iii) SECTION F (SHEET 5 OF 10 CHELMSFORD CITY COUNCIL)

nationalgrid

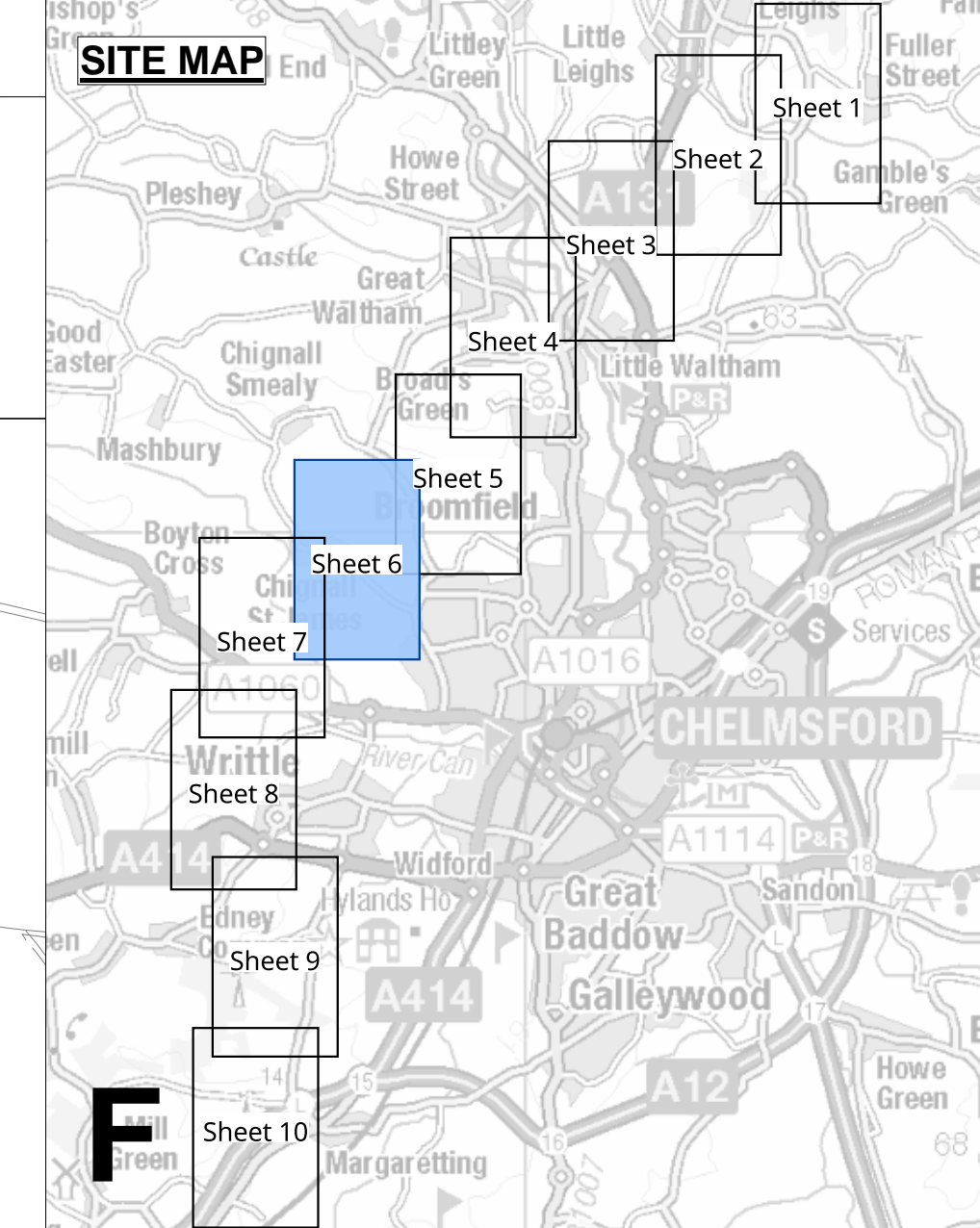
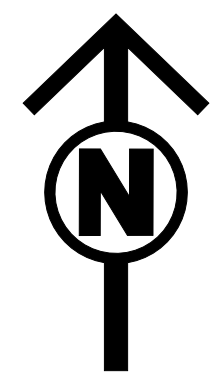
PINS Application Number: EN020027

National Grid Drawing Reference: AENC-TQST-LAN-DWG-0002

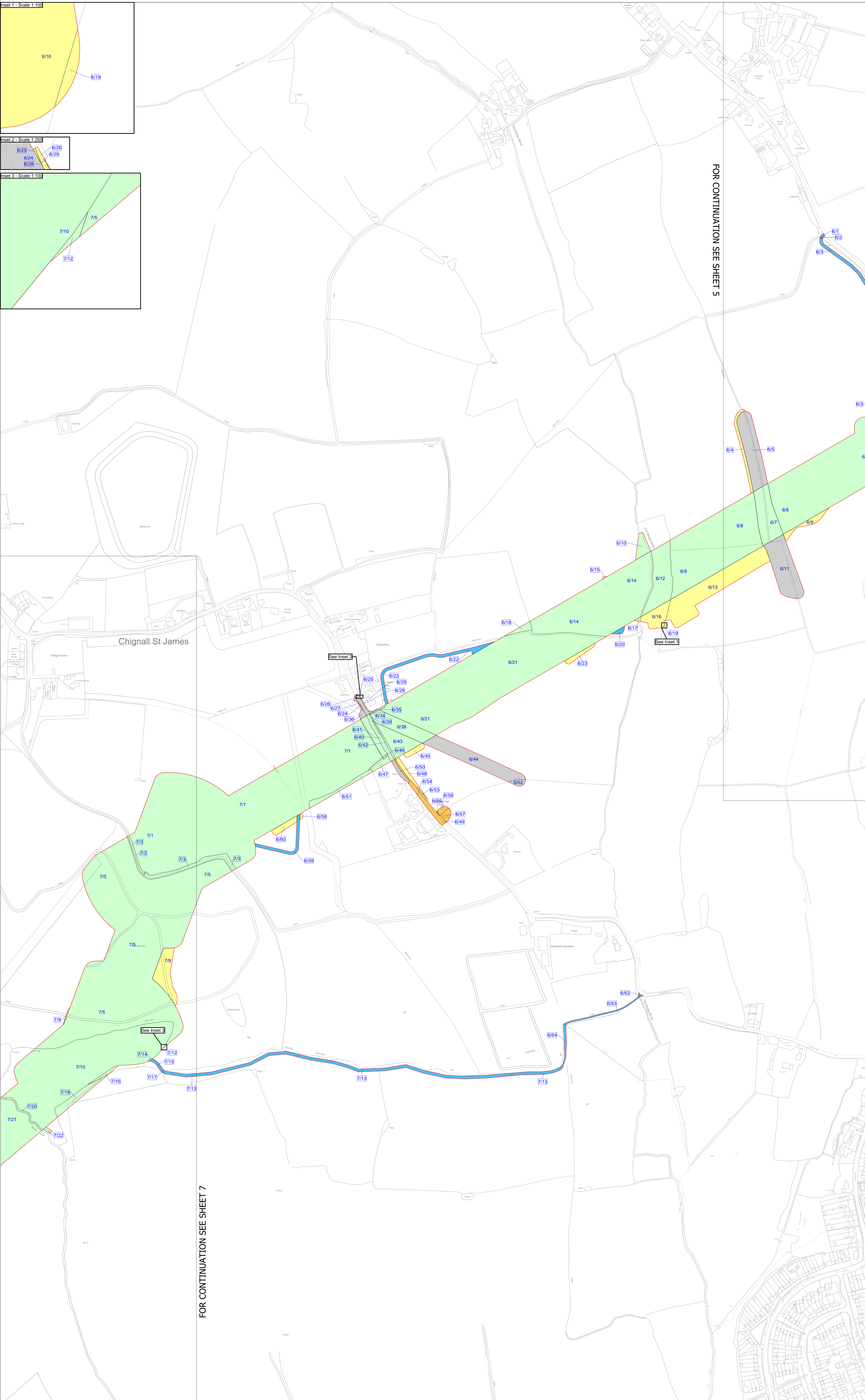
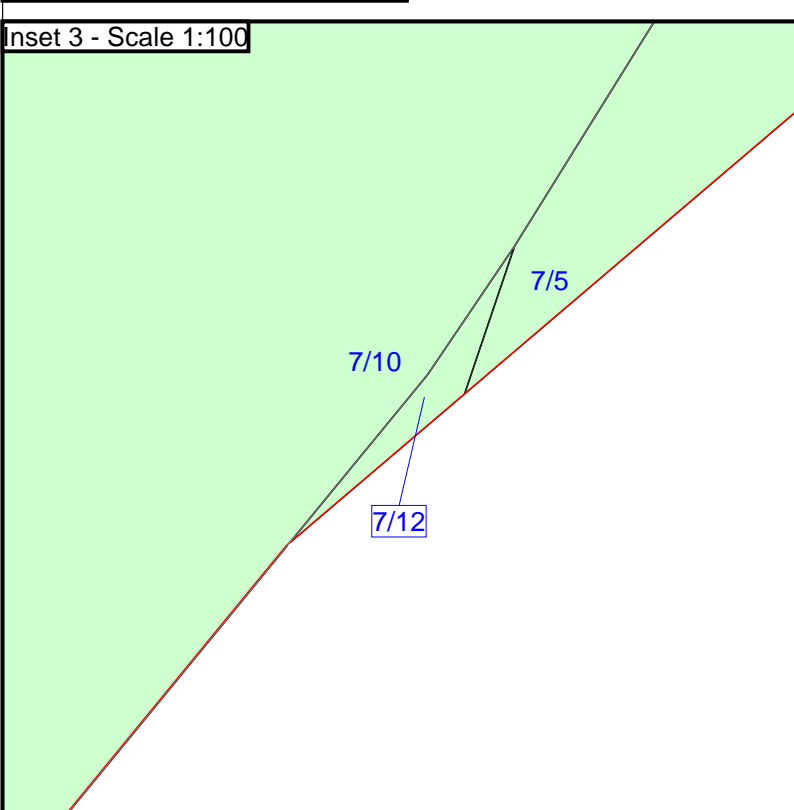
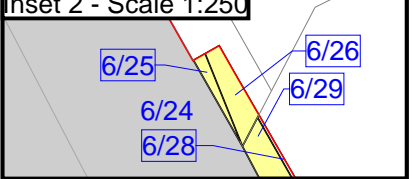
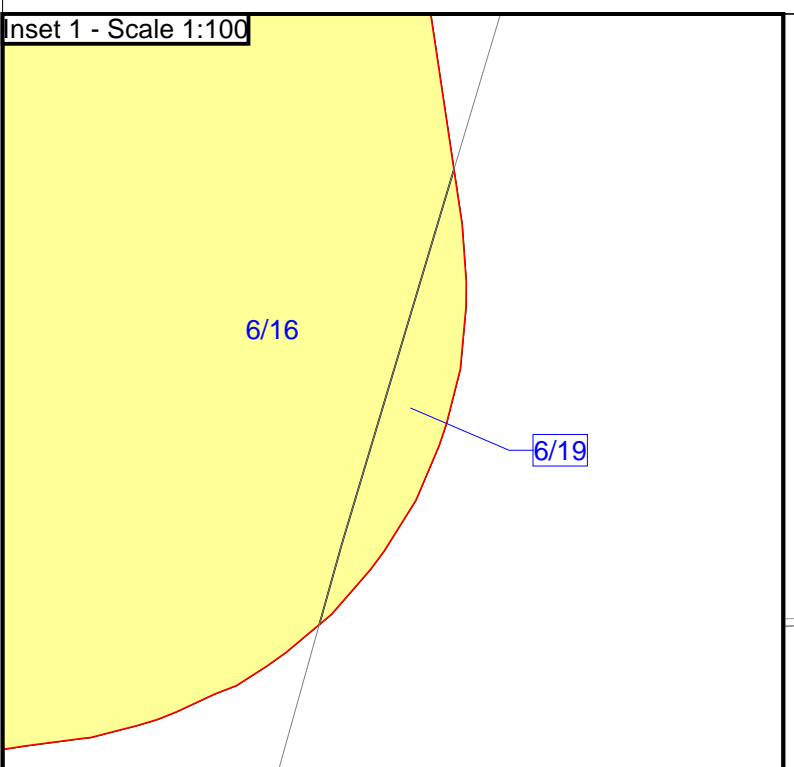
Scale	Sheet Size	Sheet	Issue
1:2,500	A0	SHEET 5 of 10	D

THE NATIONAL GRID (NORWICH TO TILBURY) ORDER
LAND PLANS
REGULATION 5(2)(i)-(iii)
SECTION F (SHEET 6 OF 10,
CHELMSFORD CITY COUNCIL)

Application Document 2.2



- Legend**
- Local authority boundary
 - Section boundary & local authority boundary
 - Section boundary
 - Sheet index cutlines
 - Order Limits
 - Class 1 - Compulsory acquisition of land
 - Class 2 - Compulsory acquisition of rights - Overhead line
 - Class 3 - Compulsory acquisition of rights - Underground cable system
 - Class 4 - Compulsory acquisition of rights - Overhead line and underground cable system
 - Class 4A - Compulsory Acquisition of Rights - Works for the protection of existing UKOP apparatus affected by the authorised development
 - Class 5 - Compulsory acquisition of rights - Access
 - Class 6 - Compulsory acquisition of rights - Drainage
 - Class 7 - Temporary use
 - Class 8 - Land not subject to powers of acquisition nor temporary use



FOR CONTINUATION SEE SHEET 5

FOR CONTINUATION SEE SHEET 7

- Notes**
1. For additional detail on the plan suites, please refer to the Guide to Plans (document reference 2.0), located in the Volume 2 of the DCO application.
 2. This drawing is scaled at paper size A0, therefore any prints taken at smaller sizes will affect accuracy of the measurement units and should not be scaled against.

Coordinate System: British National Grid
Sheet X Centroid Coordinate: 567854 Sheet Y Centroid Coordinate: 209624



BACKGROUND MAPPING INFORMATION HAS BEEN REPRODUCED FROM THE ORDINANCE SURVEY BY PERMISSION OF ORDINANCE SURVEY OF THE CONTROLLER OF HIS MAJESTY'S STATIONERY OFFICE. © CROWN COPYRIGHT AND DATABASE RIGHTS(2025) LICENCE OS100024241 AND AG0000807946.

Issue	Date	Remarks	Drawn	Checked	Approved
D	JUN-2026	For deadline five	CLJ	RCA	KPA
C	MAY-2026	For deadline four	CLJ	RCA	KPA
B	OCT-2025	October 2025 Update	SGR	AMI	CLJ
A	AUG-2025	For DCO Submission	SGR	BBU	CLJ

Title:
THE NATIONAL GRID (NORWICH TO TILBURY) ORDER LAND PLANS REGULATION 5(2)(i)-(iii) SECTION F (SHEET 6 OF 10 CHELMSFORD CITY COUNCIL)



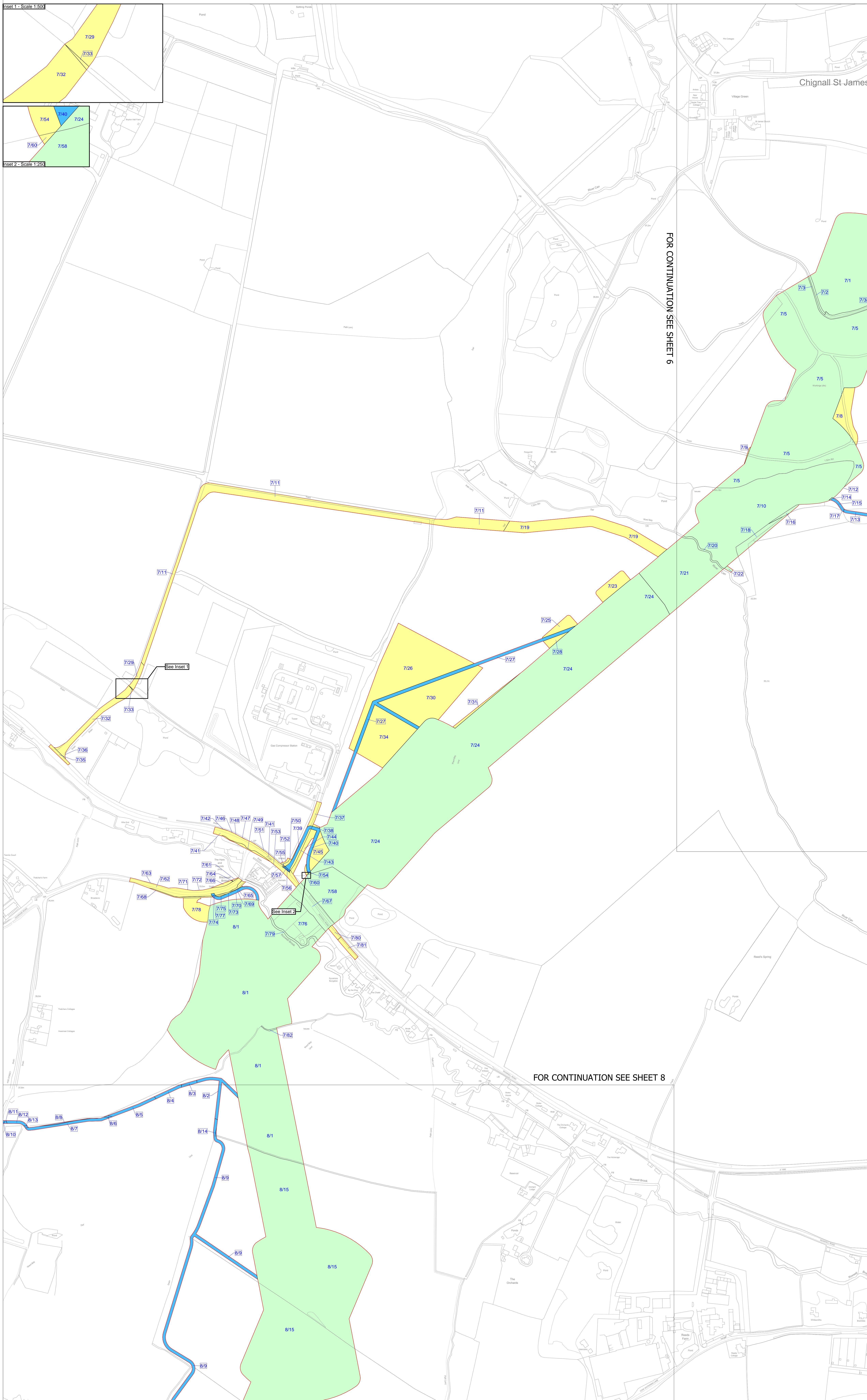
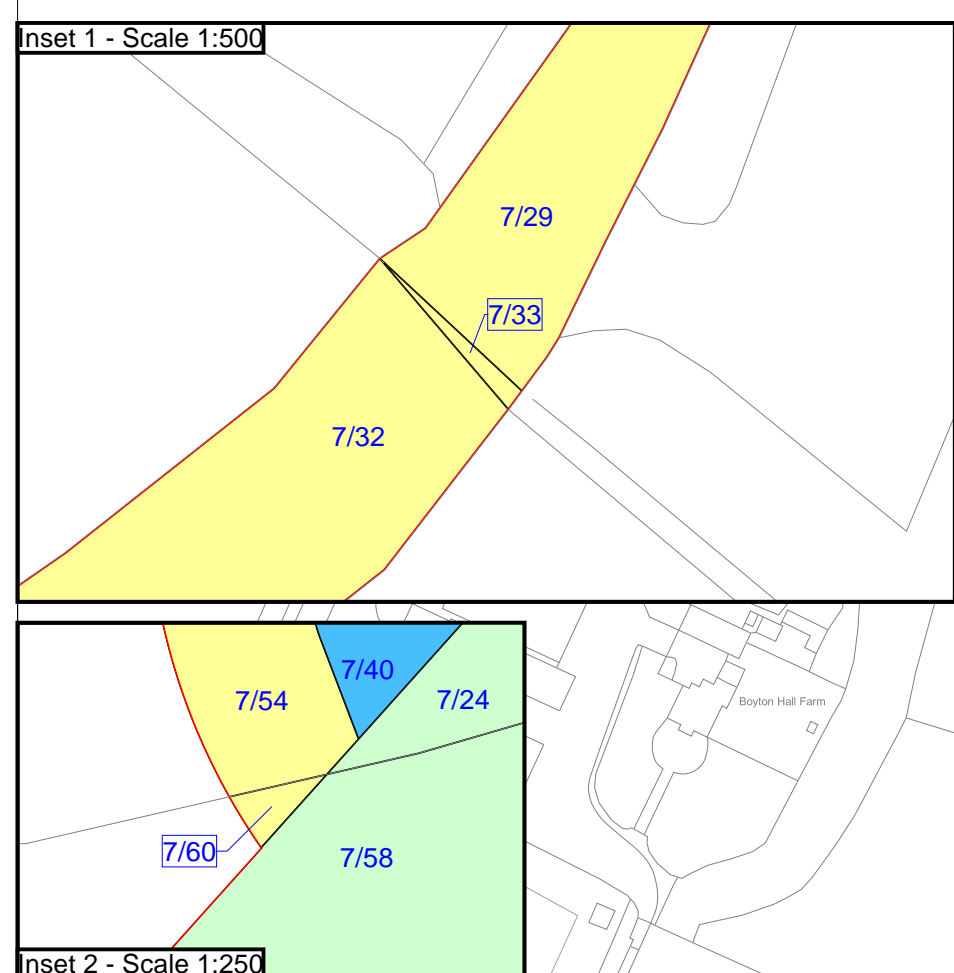
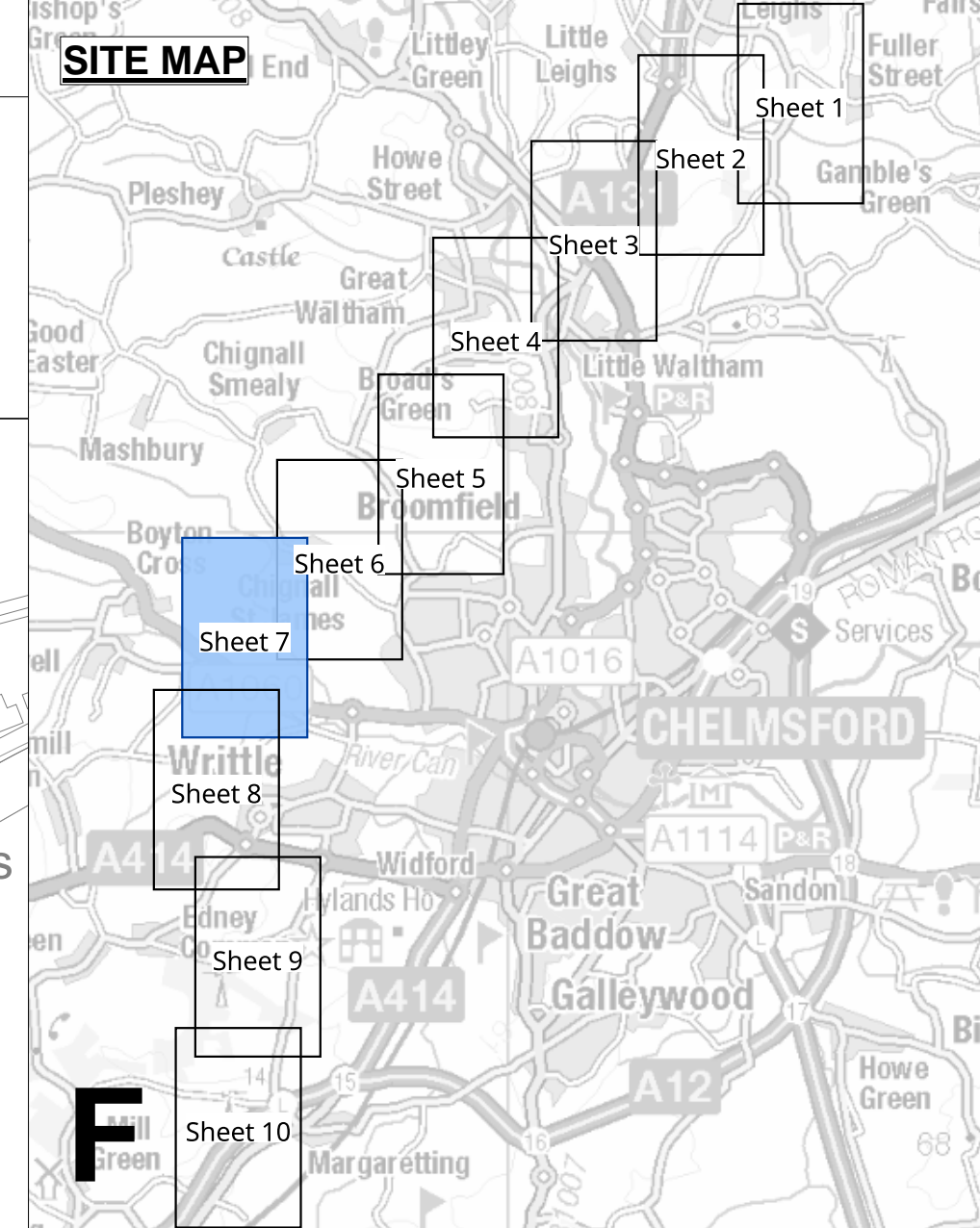
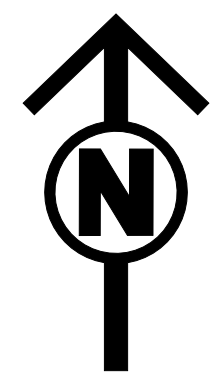
PINS Application Number: EN020027

National Grid Drawing Reference: AENC-TQST-LAN-DWG-0002

Scale	Sheet Size	Sheet	Issue
1:2,500	A0	SHEET 6 of 10	D

THE NATIONAL GRID (NORWICH TO TILBURY) ORDER
 LAND PLANS
 REGULATION 5(2)(i)-(iii)
 SECTION F (SHEET 7 OF 10,
 CHELMSFORD CITY COUNCIL)

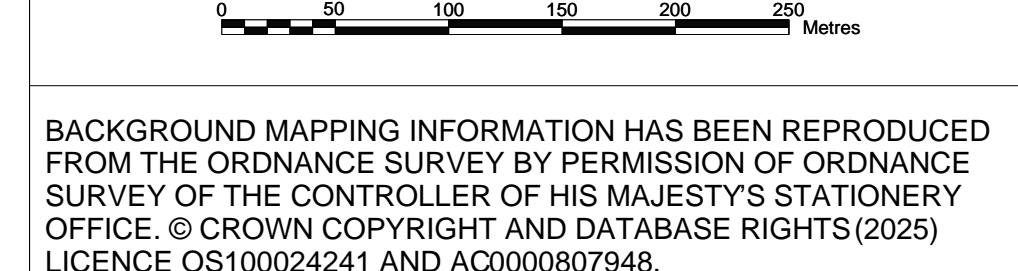
Application Document 2.2



- Legend**
- Local authority boundary
 - Section boundary & local authority boundary
 - Section boundary
 - Sheet index cutlines
 - Order Limits
 - Class 1 - Compulsory acquisition of land
 - Class 2 - Compulsory acquisition of rights - Overhead line
 - Class 3 - Compulsory acquisition of rights - Underground cable system
 - Class 4 - Compulsory acquisition of rights - Overhead line and underground cable system
 - Class 4A - Compulsory Acquisition of Rights - Works for the protection of existing UKOP apparatus affected by the authorised development
 - Class 5 - Compulsory acquisition of rights - Access
 - Class 6 - Compulsory acquisition of rights - Drainage
 - Class 7 - Temporary use
 - Class 8 - Land not subject to powers of acquisition nor temporary use

- Notes**
1. For additional detail on the plan suites, please refer to the Guide to Plans (document reference 2.0), located in the Volume 2 of the DCO application.
 2. This drawing is scaled at paper size A0, therefore any prints taken at smaller sizes will affect accuracy of the measurement units and should not be scaled against.

Coordinate System: British National Grid
 Sheet X Centroid Coordinate : 566337 Sheet Y Centroid Coordinate : 208542

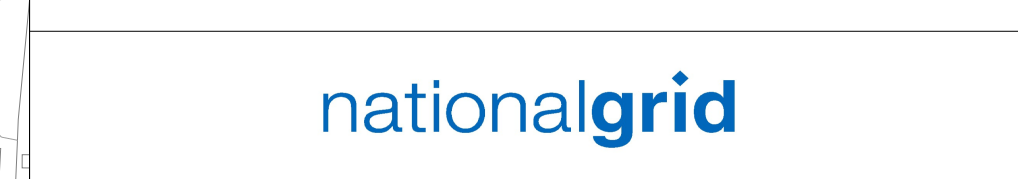


BACKGROUND MAPPING INFORMATION HAS BEEN REPRODUCED FROM THE ORDINANCE SURVEY BY PERMISSION OF ORDINANCE SURVEY OF THE CONTROLLER OF HIS MAJESTY'S STATIONERY OFFICE. © CROWN COPYRIGHT AND DATABASE RIGHTS (2025) LICENCE OS100024241 AND AG000807946.

D	JUN-2026	For deadline five	CLJ	RCA	KPA
C	MAY-2026	For deadline four	CLJ	RCA	KPA
B	OCT-2025	October 2025 Update	KRO	AMI	CLJ
A	AUG-2025	For DCO Submission	KRO	BBU	CLJ

Issue **Date** **Remarks** **Drawn** **Checked** **Approved**

Title:
 THE NATIONAL GRID
 (NORWICH TO TILBURY) ORDER
 LAND PLANS
 REGULATION 5(2)(i)-(iii)
 SECTION F (SHEET 7 OF 10
 CHELMSFORD CITY COUNCIL)



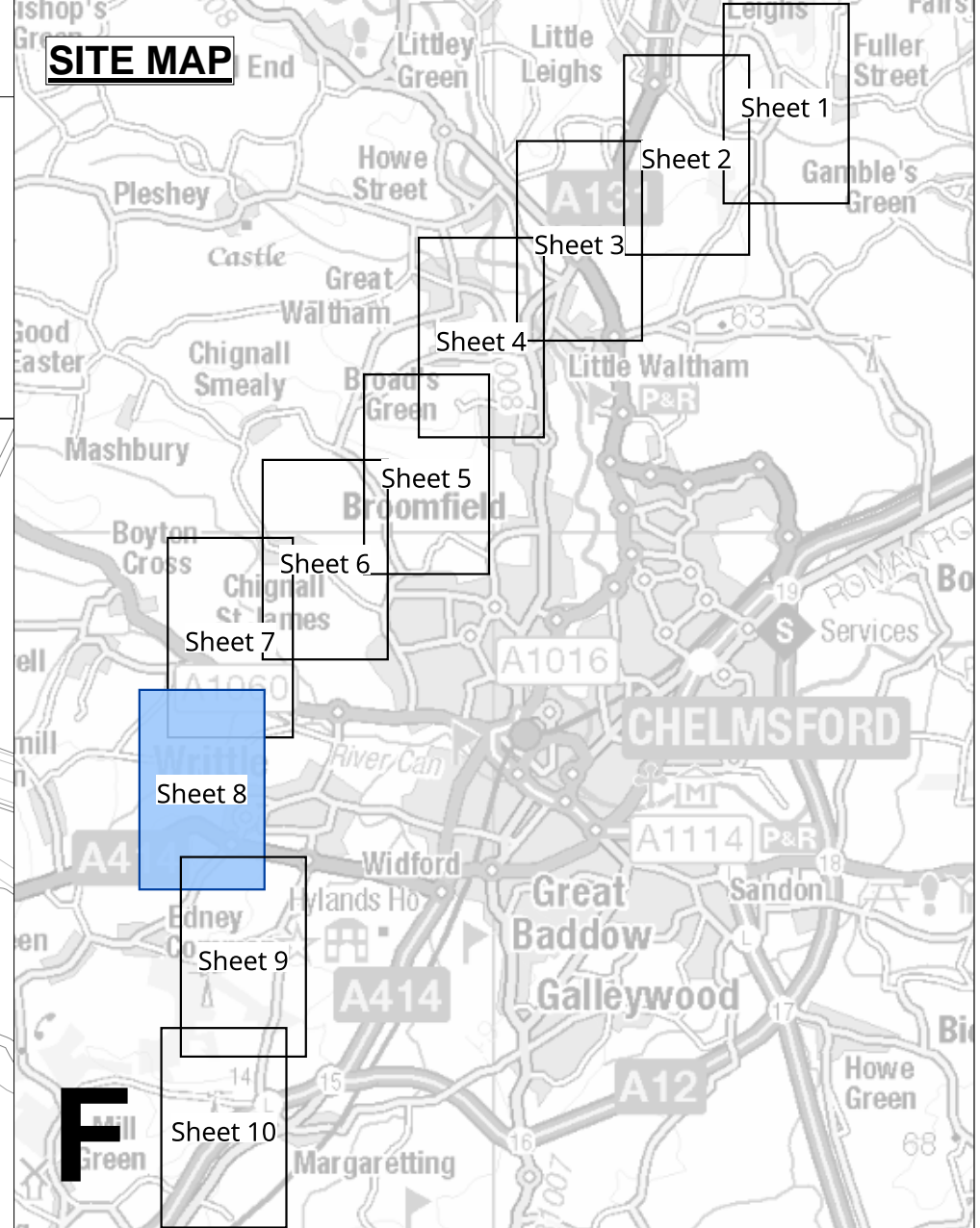
PINS Application Number:
 EN020027

National Grid Drawing Reference:
 AENC-TQST-LAN-DWG-0002

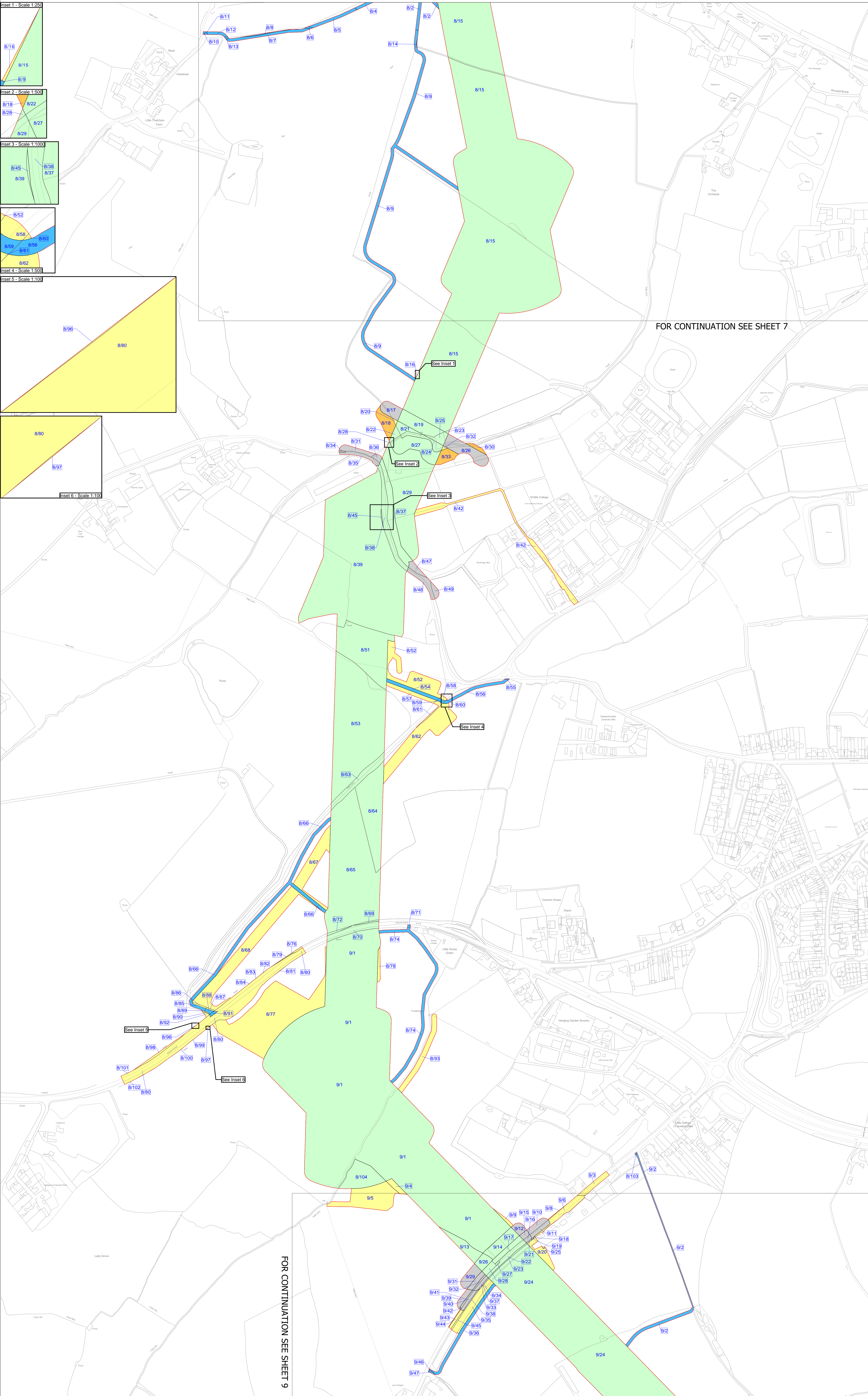
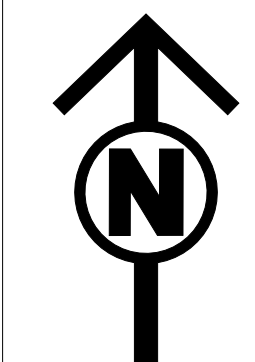
Scale	Sheet Size	Sheet	Issue
1:2,500	A0	SHEET 7 of 10	D

THE NATIONAL GRID (NORWICH TO TILBURY) ORDER
LAND PLANS
REGULATION 5(2)(i)-(iii)
SECTION F (SHEET 8 OF 10,
CHELMSFORD CITY COUNCIL)

Application Document 2.2



- Legend**
- Local authority boundary
 - Section boundary & local authority boundary
 - Section boundary
 - Sheet index cutlines
 - Order Limits
 - Class 1 - Compulsory acquisition of land
 - Class 2 - Compulsory acquisition of rights - Overhead line
 - Class 3 - Compulsory acquisition of rights - Underground cable system
 - Class 4 - Compulsory acquisition of rights - Overhead line and underground cable system
 - Class 4A - Compulsory Acquisition of Rights - Works for the protection of existing UKOP apparatus affected by the authorised development
 - Class 5 - Compulsory acquisition of rights - Access
 - Class 6 - Compulsory acquisition of rights - Drainage
 - Class 7 - Temporary use
 - Class 8 - Land not subject to powers of acquisition nor temporary use



FOR CONTINUATION SEE SHEET 7

FOR CONTINUATION SEE SHEET 9

- Notes**
- For additional detail on the plan suites, please refer to the Guide to Plans (document reference 2.0), located in the Volume 2 of the DCO application.
 - This drawing is scaled at paper size A0, therefore any prints taken at smaller sizes will affect accuracy of the measurement units and should not be scaled against.

Coordinate System: British National Grid
Sheet X Centroid Coordinate: 565944 Sheet Y Centroid Coordinate: 206431

BACKGROUND MAPPING INFORMATION HAS BEEN REPRODUCED FROM THE ORDINANCE SURVEY BY PERMISSION OF ORDINANCE SURVEY OF THE CONTROLLER OF HIS MAJESTY'S STATIONERY OFFICE. © CROWN COPYRIGHT AND DATABASE RIGHTS (2025) LICENCE OS100024241 AND AG000807946.

Issue	Date	Remarks	Drawn	Checked	Approved
D	JUN-2026	For deadline five	CLJ	RCA	KPA
C	MAY-2026	For deadline four	CLJ	RCA	KPA
B	OCT-2025	October 2025 Update	KRO	AMI	CLJ
A	AUG-2025	For DCO Submission	KRO	AMI	CLJ

Title:
THE NATIONAL GRID (NORWICH TO TILBURY) ORDER
LAND PLANS
REGULATION 5(2)(i)-(iii)
SECTION F (SHEET 8 OF 10,
CHELMSFORD CITY COUNCIL)

nationalgrid

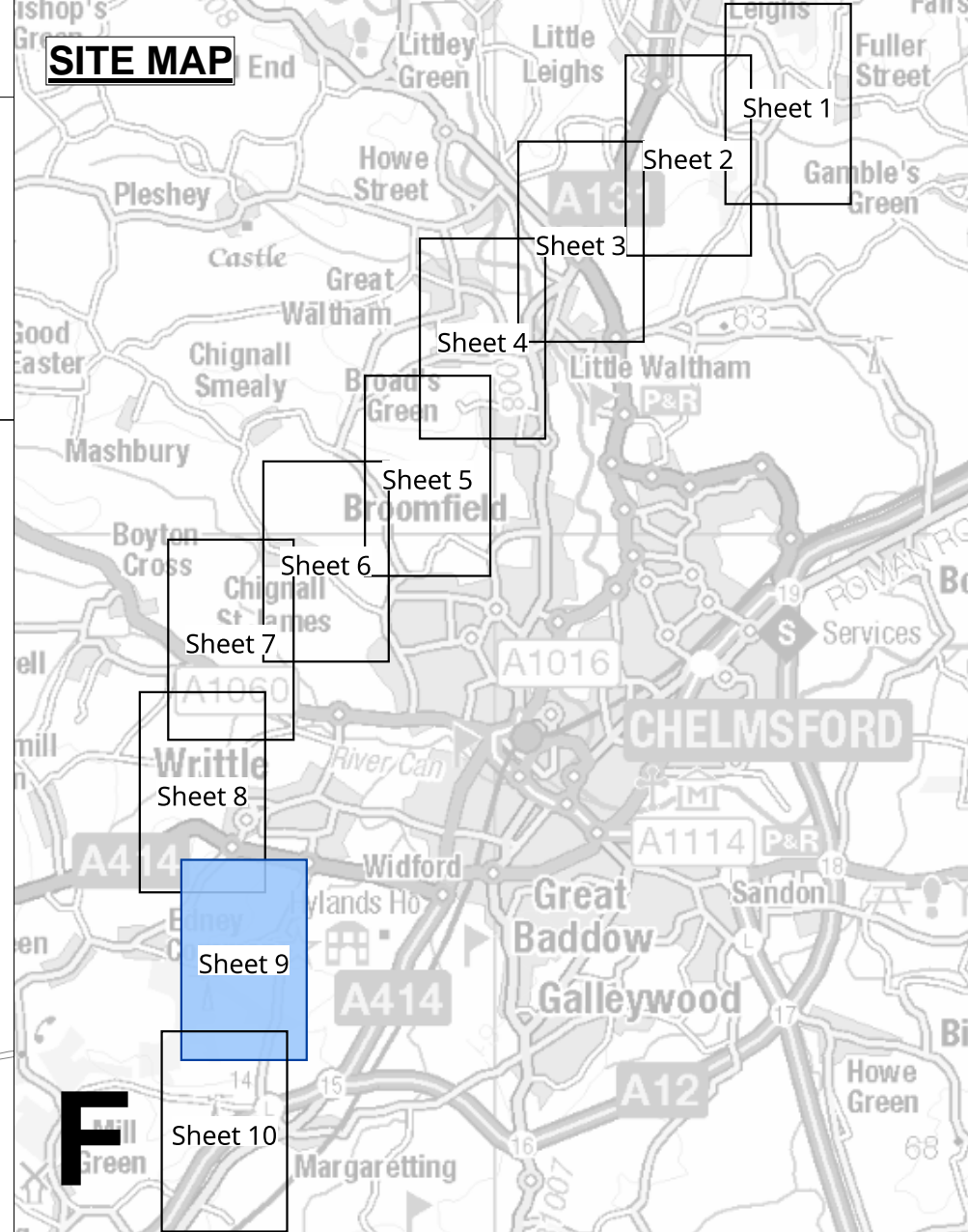
PINS Application Number: EN020027

National Grid Drawing Reference: AENC-TQST-LAN-DWG-0002

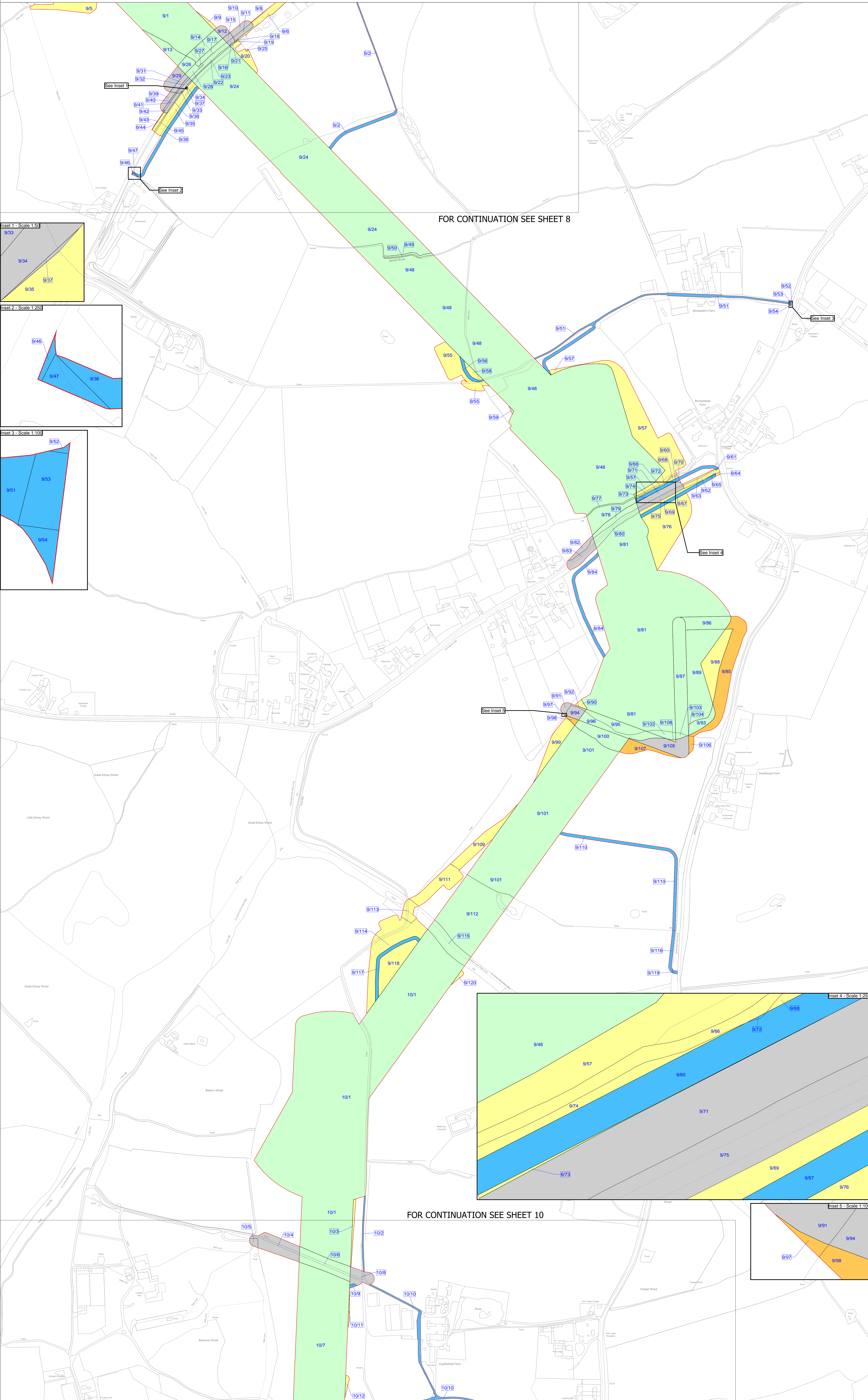
Scale	Sheet Size	Sheet	Issue
1:2,500	A0	SHEET 8 of 10	D

THE NATIONAL GRID (NORWICH TO TILBURY) ORDER
 LAND PLANS
 REGULATION 5(2)(i)-(iii)
 SECTION F (SHEET 9 OF 10,
 CHELMSFORD CITY COUNCIL)

Application Document 2.2



- Legend**
- Local authority boundary
 - Section boundary & local authority boundary
 - Section boundary
 - Sheet index cutlines
 - Order Limits
 - Class 1 - Compulsory acquisition of land
 - Class 2 - Compulsory acquisition of rights - Overhead line
 - Class 3 - Compulsory acquisition of rights - Underground cable system
 - Class 4 - Compulsory acquisition of rights - Overhead line and underground cable system
 - Class 4A - Compulsory Acquisition of Rights - Works for the protection of existing UKOP apparatus affected by the authorised development
 - Class 5 - Compulsory acquisition of rights - Access
 - Class 6 - Compulsory acquisition of rights - Drainage
 - Class 7 - Temporary use
 - Class 8 - Land not subject to powers of acquisition nor temporary use



FOR CONTINUATION SEE SHEET 8

FOR CONTINUATION SEE SHEET 10

Notes
 1. For additional detail on the plan suites, please refer to the Guide to Plans (document reference 2.0), located in the Volume 2 of the DCO application.
 2. This drawing is scaled at paper size A0, therefore any prints taken at smaller sizes will affect accuracy of the measurement units and should not be scaled against.

Coordinate System: British National Grid
 Sheet X Centroid Coordinate: 566519 Sheet Y Centroid Coordinate: 204110

BACKGROUND MAPPING INFORMATION HAS BEEN REPRODUCED FROM THE ORDNANCE SURVEY BY PERMISSION OF ORDNANCE SURVEY OF THE CONTROLLER OF HIS MAJESTY'S STATIONERY OFFICE. © CROWN COPYRIGHT AND DATABASE RIGHTS(2025) LICENCE OS100024241 AND AG000807946.

Issue	Date	Remarks	Drawn	Checked	Approved
D	JUN-2026	For deadline five	CLJ	RCA	KPA
C	MAY-2026	For deadline four	CLJ	RCA	KPA
B	OCT-2025	October 2025 Update	CBE	AMI	CLJ
A	AUG-2025	For DCO Submission	CBE	AMI	CLJ

Title:
 THE NATIONAL GRID (NORWICH TO TILBURY) ORDER
 LAND PLANS
 REGULATION 5(2)(i)-(iii)
 SECTION F (SHEET 9 OF 10
 CHELMSFORD CITY COUNCIL)

nationalgrid

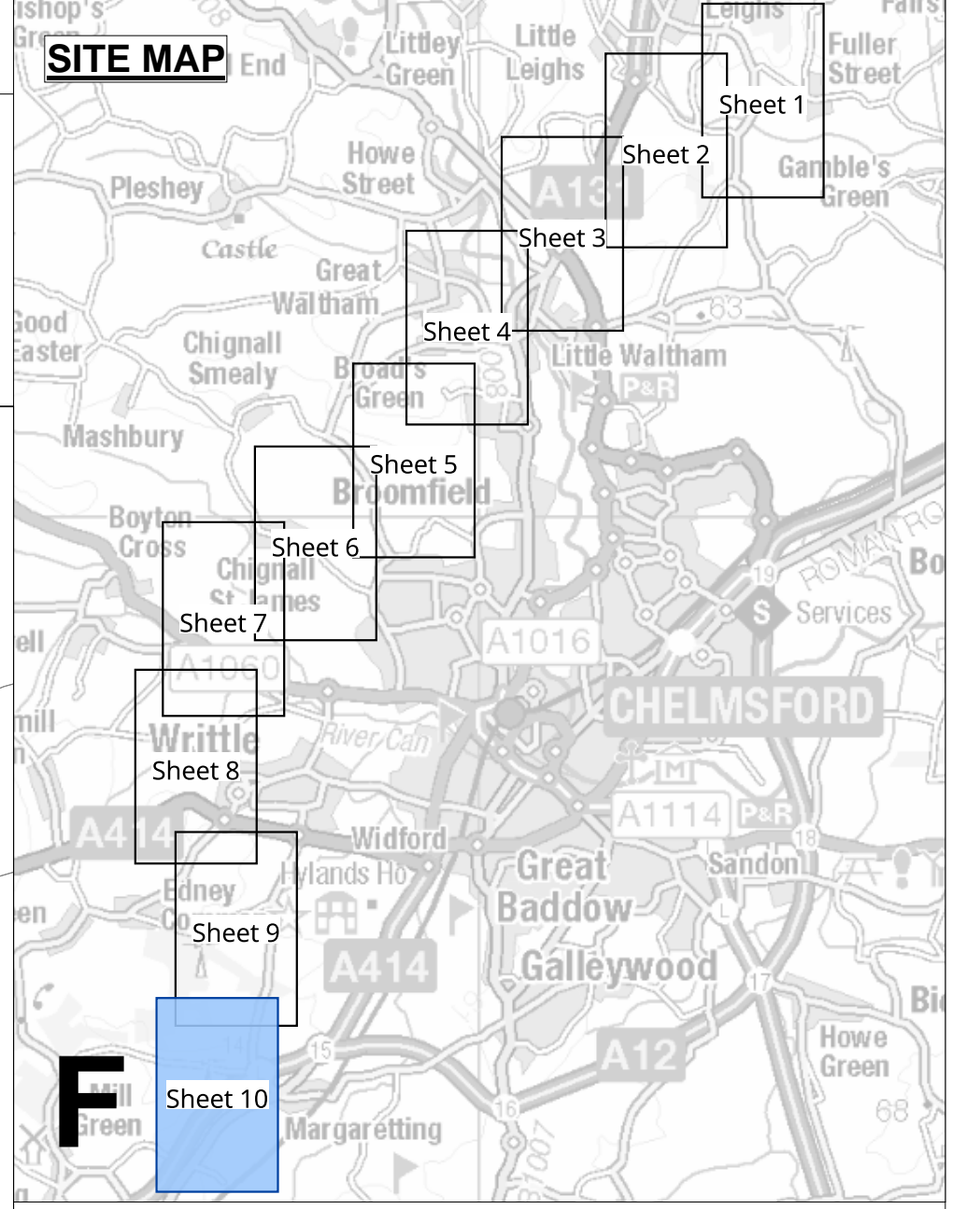
PINS Application Number: EN020027

National Grid Drawing Reference: AENC-TQST-LAN-DWG-0002

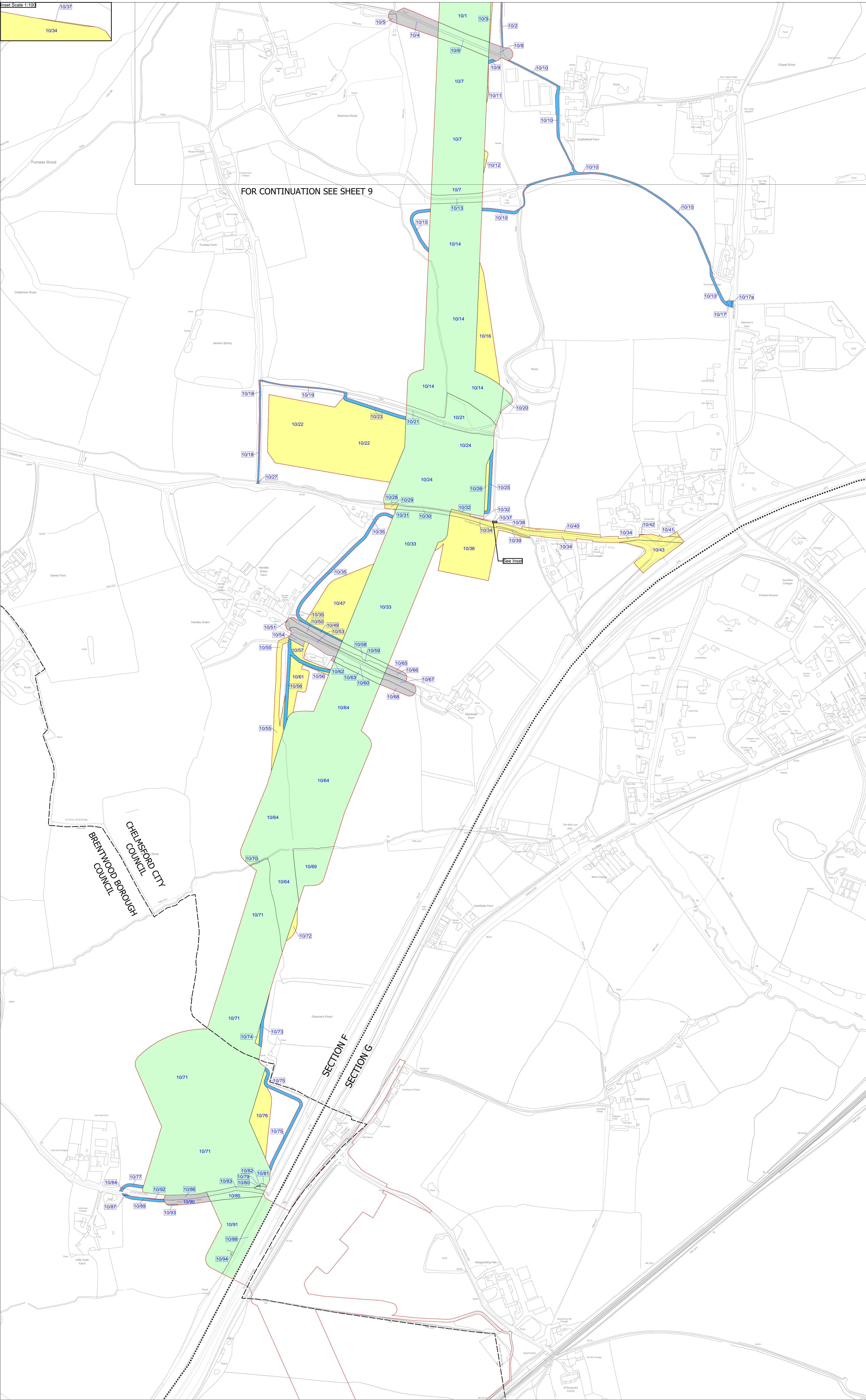
Scale	Sheet Size	Sheet	Issue
1:2,500	A0	SHEET 9 of 10	D

THE NATIONAL GRID (NORWICH TO TILBURY) ORDER
 LAND PLANS
 REGULATION 5(2)(i)-(iii)
 SECTION F (SHEET 10 OF 10,
 CHELMSFORD CITY COUNCIL AND BRENTWOOD BOROUGH COUNCIL)

Application Document 2.2



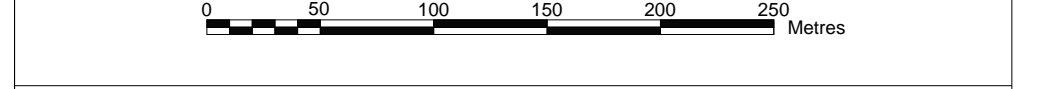
- Legend**
- Local authority boundary
 - Section boundary & local authority boundary
 - Section boundary
 - Sheet index cutlines
 - Order Limits
 - Class 1 - Compulsory acquisition of land
 - Class 2 - Compulsory acquisition of rights - Overhead line
 - Class 3 - Compulsory acquisition of rights - Underground cable system
 - Class 4 - Compulsory acquisition of rights - Overhead line and underground cable system
 - Class 4A - Compulsory Acquisition of Rights - Works for the protection of existing UKOP apparatus affected by the authorised development
 - Class 5 - Compulsory acquisition of rights - Access
 - Class 6 - Compulsory acquisition of rights - Drainage
 - Class 7 - Temporary use
 - Class 8 - Land not subject to powers of acquisition nor temporary use



FOR CONTINUATION SEE SHEET 9

- Notes**
- For additional detail on the plan suites, please refer to the Guide to Plans (document reference 2.0), located in the Volume 2 of the DCO application.
 - This drawing is scaled at paper size A0, therefore any prints taken at smaller sizes will affect accuracy of the measurement units and should not be scaled against.

Coordinate System: British National Grid
 Sheet X Centroid Coordinate: 566248 Sheet Y Centroid Coordinate: 201736



BACKGROUND MAPPING INFORMATION HAS BEEN REPRODUCED FROM THE ORDINANCE SURVEY BY PERMISSION OF ORDINANCE SURVEY OF THE CONTROLLER OF HIS MAJESTY'S STATIONERY OFFICE. © CROWN COPYRIGHT AND DATABASE RIGHTS (2025) LICENCE OS100024241 AND AG0000807946.

D	JUN-2026	For deadline five	CLJ	RCA	KPA
C	MAY-2026	For deadline four	CLJ	RCA	KPA
B	OCT-2025	October 2025 Update	CBE	AMI	CLJ
A	AUG-2025	For DCO Submission	CBE	KGA	CLJ

Issue	Date	Remarks	Drawn	Checked	Approved
-------	------	---------	-------	---------	----------

Title:
 THE NATIONAL GRID (NORWICH TO TILBURY) ORDER
 LAND PLANS
 REGULATION 5(2)(i)-(iii)
 SECTION F (SHEET 10 OF 10
 CHELMSFORD CITY COUNCIL AND
 BRENTWOOD BOROUGH COUNCIL)



PINS Application Number:
 EN020027

National Grid Drawing Reference:
 AENC-TQST-LAN-DWG-0002

Scale	Sheet Size	Sheet	Issue
1:2,500	A0	SHEET 10 of 10	D

National Grid plc
National Grid House,
Warwick Technology Park,
Gallows Hill, Warwick.
CV34 6DA United Kingdom

Registered in England and Wales
No. 4031152
nationalgrid.com